



# DXi™ CENTRAL CONTROL SYSTEM FOR SENTINEL® WMS



Toro DXi Central Control Satellite is a single powerful hardware platform capable of supporting two powerful software packages, Rain Master® Laguna™ or Sentinel® Water Management Software (WMS). DXi comes loaded with features to make precise water management convenient and flexible. **Cloud-Based Data Management** simplifies irrigation management with access from anywhere, anytime. **Enhanced Features** and new precision irrigation management capabilities make water management, scheduling and monitoring adaptable to site specific or user specific needs. And the **Future Ready** hardware platform means the DXi can accommodate new innovations and changing site needs quickly and economically.

## FEATURES & BENEFITS

### Convenient Mobile Access

The free ProMax™ Connect app offers irrigation managers access to DXi controllers from anywhere, anytime.

### Build to Order

Comes in a variety of configurations, from multiple enclosure options, to multiple irrigation methods: conventional, 2-wire or hybrid.

### Multiple Communication Options

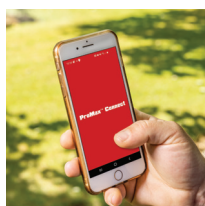
Including cellular; cellular communication kits include 10-years of service with no initial service subscription.

### Range of Functionality

DXi offers a wide range of functionality, from basic irrigation scheduling to ET, Flow-Sharing and Flow Management.

### Evolve at your own Pace

Current Laguna and WMS users can retrofit their existing irrigation controllers without having to replace the central software.



# PRODUCT HIGHLIGHT

## DXi™ Central Control System

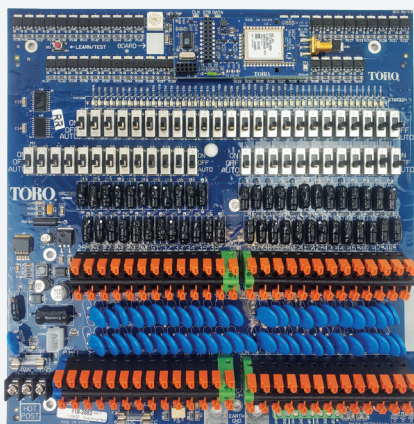
### Advanced Central Control Satellite

Toro® DXi satellite, is one of the most advanced, easy to use controllers on the market. Its "Automatic Intelligence" takes corrective action when certain system issues arise, ensuring, the water management professional is equipped with the ultimate flexibility in "smart" irrigation central control and the water management tools to maximize returns on any project.

### Additional Features for WMS Configuration

- ✓ Conventional station configurations options range from 8 to 204\*, 2-Wire configuration option from 1 to 204 and Hybrid systems range from 8 to 204 stations
  - ✓ Built to order with many configurations to choose from
  - ✓ 16 conventional programs with 8 start times per program
  - ✓ Built-in remote control jack for ProMax™ (permanent internal remote mount available)
  - ✓ Up to 48 "omit day(s)"
  - ✓ 900MHz radio for wireless output boards (WOBs) compatibility (communicate to up to 4 WOBs per satellite)
  - ✓ Compatible with Turf Guard® Wireless Soil Sensor and 2-Wire Moisture Sensor.
- 1 ✓ "Electronic paper-style" LCD display for use in heavy sunlight, integrated LED backlight for dark conditions (superior contrast level)
  - 2 ✓ Innovative soft keys for screen
  - 3 ✓ Specific functions & LED "ring" indicators
  - 4 ✓ Custom-fit clear covers for all electrical boards
  - 5 ✓ Pivotech™ pivoting bracket for easy installation (SPED and PSB only)
- ✓ Innovative "fridge light" cabinet illumination (see next page)
  - ✓ Nonvolatile memory
  - ✓ Industrial lightning/surge protection comes standard
  - ✓ 5-year limited warranty

\*Utilization of local 8-station outputs plus wireless output boards.



1 "Electronic Paper-style" LCD Display

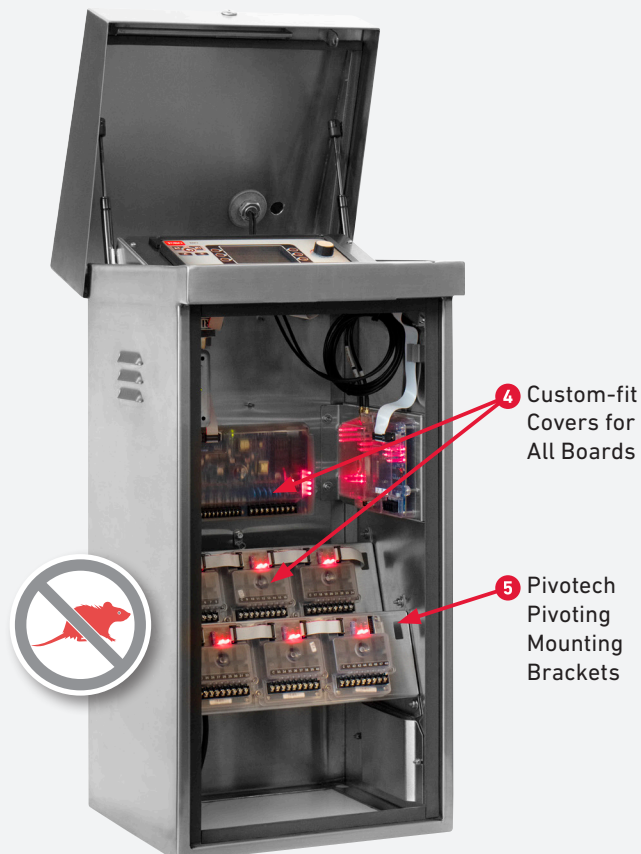
2 Soft Keys

3 Indicator LED

### Communication Options

- ✓ Cellular (ProMax Connect Compatible)
- ✓ Serial
- ✓ Ethernet (ProMax™ Connect Compatible)
- ✓ Ethernet-to-radio (AKA CTM)
- ✓ UHF Radio
- ✓ Wi-Fi (ProMax Connect Compatible)

### Pivoting Bracket for Easy Installation



4 Custom-fit Covers for All Boards

5 Pivotech Pivoting Mounting Brackets



## DXI™ CONTROLLER SPECIFICATION

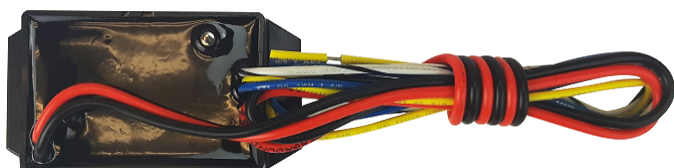
Firmware for Central Control Configuration*	
DXi-FMW-WMS	For Toro Sentinel WMS Central System Only
Controller Model	
DXi-	DXi Irrigation Controller
Enclosure Type	
PWM	Painted Wall Mount Enclosure
SWM	Stainless Steel Wall Mount Enclosure
SPED	Stainless Steel Pedestal Enclosure, Type 1
PSB	Stainless Steel Pedestal Enclosure, Type 2
PPED	Plastic Pedestal Enclosure
DPSB	Stainless Steel Pedestal Double Wide Enclosure
Station Count	
TW	200-Station 2-Wire Output Gateway
08	8-Station Conventional Output
16	16-Station Conventional Output
24	24-Station Conventional Output
32	32-Station Conventional Output
40	40-Station Conventional Output
48	48-Station Conventional Output
56	56-Station Conventional Output, DPSB Enclosure Only
64	64-Station Conventional Output, DPSB Enclosure Only
72	72-Station Conventional Output, DPSB Enclosure Only
80	80-Station Conventional Output, DPSB Enclosure Only
88	88-Station Conventional Output, DPSB Enclosure Only
96	96-Station Conventional Output, DPSB Enclosure Only
HY08	8-Station Conventional Output With TW Output Gateway, SPED Enclosure Only
HY16	16-Station Conventional Output With TW Output Gateway, SPED Enclosure Only
HY24	24-Station Conventional Output With TW Output Gateway, SPED Enclosure Only
HY32	32-Station Conventional Output With TW Output Gateway, SPED Enclosure Only
HY40	40-Station Conventional Output With TW Output Gateway, SPED Enclosure Only
HY48	48-Station Conventional Output With TW Output Gateway, SPED Enclosure Only
Communication Add-on	
M8C	Cellular Kit with Antenna (Includes 10-years of Service)
M8W	Wi-Fi Kit with Antenna
M8U	UHF Radio Kit with Antenna
Other Add-ons	
P	ProMax™ Remote Receiver Kit
E	900MHZ XTND Radio Kit, WMS DXi Only
PE	ProMax Remote Receiver Kit with 900MHZ XTND Radio Kit, WMS DXi Only

\* Each DXi order must include the firmware version SKU.

### SAMPLE SPECIFICATION

Example: DXI-FMW-WMS + DXI-SPED48M8CP

WMS configured DXi 48-station controller in stainless steel pedestal (SPED), cellular kit with antenna and 10-years communication service, and ProMax permanent mount remote receiver with antenna.



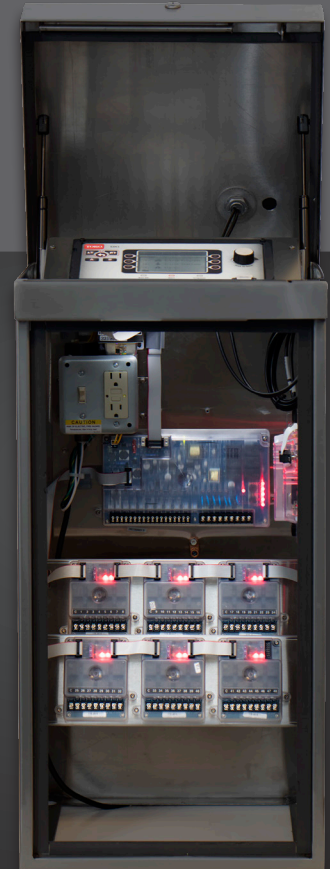
## SPECIFICATIONS

### Electrical

- Input power: 100-120VAC, 50/60HZ
- Output power: 24VAC, 2.75 amps max total draw @ 140°F (60°C), 2.5 amps max per station/pump/master valve
- Transformer: 24VAC, 100VA
- UL, CUL & FCC approved

### Dimensions

- PWM: H:23" W:19" D:8"
- SWM: H:23" W:19" D:9"
- SPED: H:35" W:16" D:14"
- PSB: H:38" W:16" D:15.5"
- DPSB: H:38" W:24" D:17"
- PPED: H:35" W:16" D:14"



### "Fridge Light" Cabinet Illumination\*

\*Standard in all models

## 2-WIRE DECODERS AND ACCESSORIES MODEL LIST

Model	Description
SB-DAC-1	1-station AC decoder
SB-DAC-2	2-station AC decoder
SB-DAC-4	4-station AC decoder
SB-BLA	AC in-line surge protection
TW-CAB-14	14 AWG polycoated 2-wire
TW-SPLICE-14	14 AWG water-tight splices
TW-PROG	Portable decoder programmer
TW-DAC-FLOW	Flow sensor decoder
TW-DAC-SOIL	Moisture sensor device

### AC Decoder Highlights

- ✓ Wire fault detection automatically shuts down valve
- ✓ Easy-to-read LED status indication for every command
- ✓ LED also displays valve activation and diagnostic reporting
- ✓ Troubleshooting capabilities:
  - LED decoder "active" indication
  - LED valve power "on" indication
  - Two-way communication verification

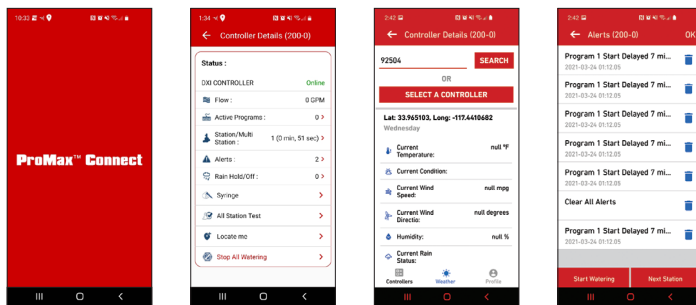


## PROMAX™ Connect

The ProMax Connect App is a free cloud-based maintenance remote tool that allows users to operate stations and programs. With a simple and user-friendly interface, troubleshooting field issues can be performed with ease from your mobile device. ProMax Connect is available for download on the Google™ Play Store and Apple® App Store®.

### Additional Features

- ✓ Valid Program Activation
- ✓ Single or Multi-Station Activation
- ✓ Monitor Real-Time Flow Rates
- ✓ Rain Hold Management
- ✓ Create & Activate a One-Time Program "Syringe"
- ✓ Monitor and Manage Alerts
- ✓ All Station Test Implementation & Management
- ✓ View Local Weather in Real Time



\*Google Play store and Apple App Store are trademarks or registered trademarks of their respective companies in the United States and other countries.

### SENTINEL CENTRAL MODEL LIST

Model	Description
<b>CENTRAL SOFTWARE/COMPUTER MODELS</b>	
SGIS-1-T	Software Only with 2 years of NSN® Support
DXi-ETHER-RF-RPTR	DXi Ethernet to Radio Base Station with Antenna (AKA CTM)
<b>NSN SUPPORT EXTENSION MODELS</b>	
SSE-T-1	1 year Extension for SGIS-0-1 of SGIS-1-T
SSE-T-3	3 year Extension for SGIS-0-1 of SGIS-1-T
SSE-C-1	1 year Extension for SGIS-1-0 (with computer warranty)
SSE-C-3	3 year Extension for SGIS-1-0 (with computer warranty)

## Sentinel® WMS

Sentinel Central Control from Toro® is a powerful system that literally "stands guard" over irrigation sites. With the ability to control up to 999 field satellites from one location, users have a water management tool that provides ultimate customizability and reliability.

## FEATURES & BENEFITS

### Simple To Use

Microsoft® Windows®-based software – daily operations and scheduling are made quick and easy.

### Features For Water Management

ET-based watering, flow sensing and optimization, water usage report with historical comparison maximize system efficiency.

### Smartphone and Tablet Connectivity

The new Sentinel WMS software package includes Android, iPhone®, and iPad™ connectivity for remote programming and alerts on ALL new systems.

### Multiple Communication Options

Communication options like radio, Wi-Fi, cellular, and Ethernet can be mixed and matched to meet system requirements.

### Distributed Programming

Stores irrigation programs in the computer while allowing irrigation control at the satellite level, ensuring the loss of a component does not result in the loss of irrigation across the system.

### Toro NSN® Support

All centrals come with a minimum of two years of NSN support – unlimited 24-hour toll-free support with 24/7/365 emergency paging.



\*Windows is a registered trademark of Microsoft Corporation in the U.S. and other countries.

\*\*iPhone and iPad are registered trademarks of Apple, Inc. in the U.S. and other countries.



[www.toro.com](http://www.toro.com)

The Toro Company • Irrigation Business • 5825 Jasmine St. • Riverside, CA • 92504 • 877-345-8676

Specifications subject to change without notice. For more information, contact your local Toro distributor. ©2021 The Toro Company. All rights reserved. PN: 21-1197-IRC