



# Jandy® Pro Series Stealth™ Pump Body Replacement Kit Instructions

**FOR YOUR SAFETY:** This product must be installed and serviced by a professional service technician, qualified in pool/spa installation. The procedures in this manual must be followed exactly. Improper installation and/or operation can create mechanical or electrical hazards that could result in death, serious personal injury and/or property damage. Improper installation and/or operation will void the warranty.

**These instructions are to be used with the following Jandy Pro Series Replacement Parts:  
R0445601-- Body Replacement Kit (SHPF/SHPM/SWF/JEP)**

## ⚠ WARNING

Before servicing the pump, be sure to switch off the circuit breaker to the circuit supplying power to the pump motor. Failure to do so could result in property damage, severe personal injury, and/or death.

| Parts List         | R0445601 |
|--------------------|----------|
| <b>Description</b> |          |
| Body, Pump         | 1        |
| Instructions       | 1        |

## 1. Introduction

This procedure contains information for the proper replacement of the pump body on the Jandy Pro Series Stealth™ Pump (SHPF/SHPM) and Jandy Pro Series Stealth WaterFall Pump (SWF) and Jandy Pro Series ePump™ (JEP). Refer to Figure 1 and the parts list to identify the part included in the replacement kit. ***These instructions must be followed exactly. Read them completely before starting the procedures.***

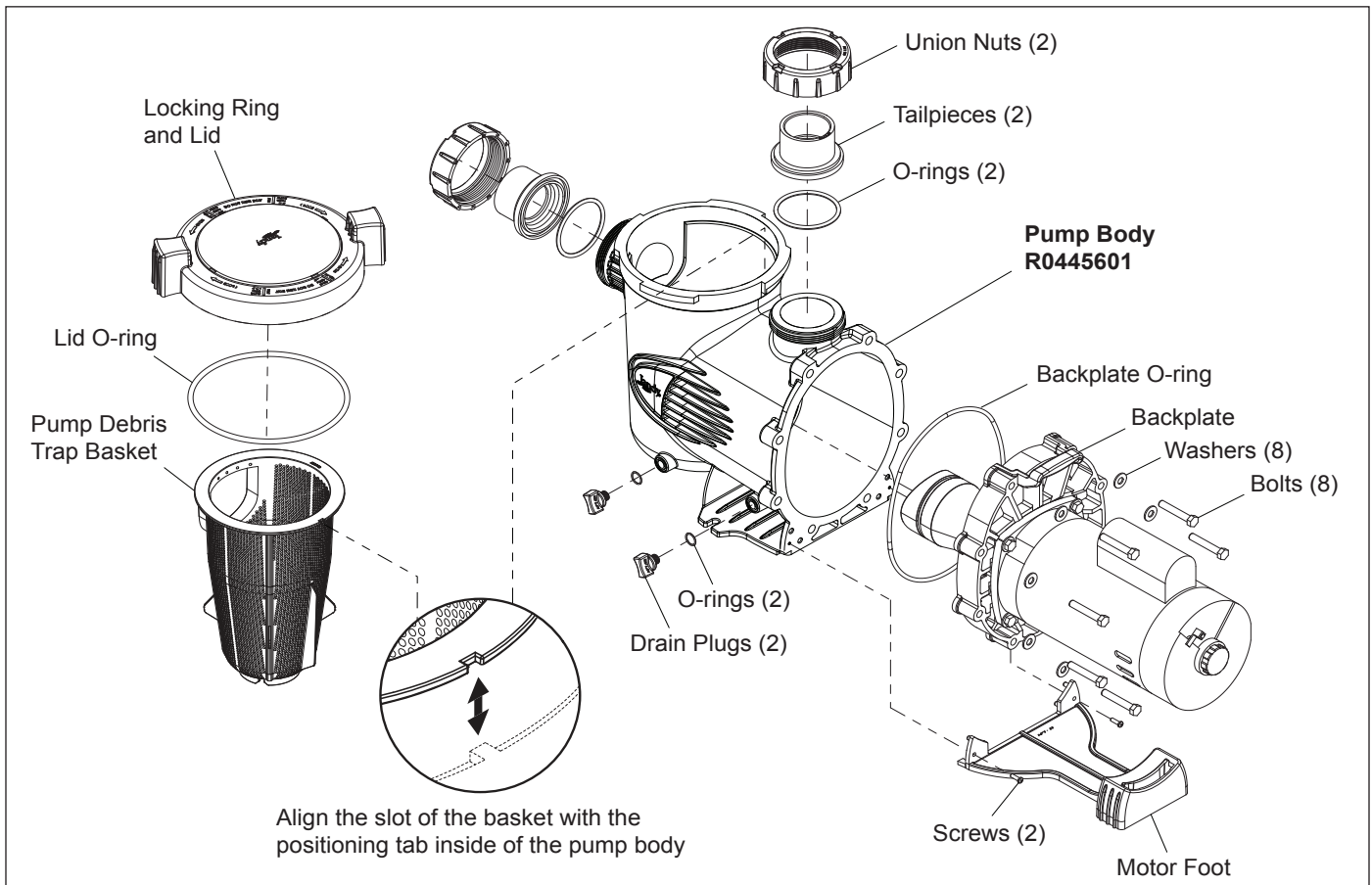


Figure 1. Pump Exploded View

## 2. Pump Assembly

1. Turn off the pump. Switch off the circuit breaker to the pump motor.
2. Close all necessary valves to prevent pool water from reaching the pump. Remove the drain plugs and o-rings to drain the water from the pump. See Figure 1.

### WARNING

Due to the potential risk of fire, electric shock, or injuries to persons, Jandy Pumps must be installed in accordance with the National Electrical Code® (NEC®), in the USA, or the Canadian Electrical Code (CEC) in Canada. All applicable local codes must also be followed.

The NEC may be obtained by contacting the National Fire Protection Association (NFPA) at 1-800-344-3555 or 1-617-770-3000.

3. Using a 9/16" wrench, loosen the eight (8) bolts connecting the pump body to the motor backplate.
4. Pull the motor with attached backplate assembly out of the pump body. Remove the backplate o-ring from the pump body.
5. Remove the tailpiece, union nuts and o-rings from the inlet and outlet ports of the pump body. If necessary, you can use a spanner wrench to help loosen the union nuts.
6. Following the markings on the lid's locking ring, turn the ring counter-clockwise until the 'START' markings align with the ports. Remove the lid with locking ring and the lid o-ring.
7. Lift the pump debris trap basket out of the pump.
8. Remove the nuts and washers anchoring the pump to the equipment pad and remove the old pump body.

## 3. Pump Assembly

1. Place the new pump body on the equipment pad. Anchor it to the equipment pad with the nuts and washers removed during disassembly.

**NOTE** Before reinstalling the various o-rings removed during disassembly, remove debris around the o-rings and their mating surfaces to prevent air leaks in the system. Take great care to keep the o-rings and mating parts clean.

### WARNING

Trapped air in system can cause the filter lid to be blown off, which can result in death, serious personal injury, and/or property damage. Be sure all the air is out of the system before operating.

2. Reinstall the drain plugs with o-rings onto the pump body. **Hand-tighten only; do not use any tools.** Do not exceed 18-20 in-lbs of torque.
3. Reinstall the o-rings into the groove of the tailpieces and **hand-tighten** the union nuts into the ports of the pump. **Do not use any tools to tighten the union nuts.**
4. Slide the motor and backplate assembly into the pump body.
5. Slide the diffuser into the inside centric hole of the pump body. While supporting the motor, start two (2) screws on opposite sides. (This will hold the motor in position while you start the other screws.) Start the remaining six (6) screws.
6. Tighten the eight (8) screws lightly in a crossing "X" pattern using a 9/16" wrench. Start with the inner (middle) four (4), then tighten the outer (top and bottom) four (4) to draw the backplate to the body in an even manner. When all the screws are snug, tighten in the same order to 15 ft-lbs of torque.
7. Place the pump debris trap basket assembly into the pump body. Make sure that the slot of the basket is aligned with the positioning tab inside of the pump body. If aligned properly, the basket will drop easily into place. **Do not force it into place.** See Figure 1.

### **CAUTION**

A misaligned basket will cause the lid to be improperly seated, allowing an air leak, which could result in pump damage.

8. Fill the pump trap with water before starting the pump.

NOTE Before reinstalling the lid, remove debris around the lid o-ring seat, as debris will cause air leaks in the system.

 **WARNING**

Trapped air in system can cause the filter lid to be blown off, which can result in death, serious personal injury, and/or property damage. Be sure all the air is out of the system before operating.

9. Place the lid with locking ring onto the pump body. Following the markings on the locking ring, align the 'START' markings with the ports and turn the ring clockwise until the 'LOCKED' markings align with the ports. ***Hand-tighten the lid; do not use any tools to tighten it.***
10. Return the valves to the proper position for normal operation. Open the filter pressure release valve in order to bleed air.
11. After all the air has been bled from the filter, close the pressure release valve.
12. Switch on the circuit breaker to the pump motor.
13. Turn on the power to the pump and check for normal operation.

## NOTES

**Zodiac Pool Systems, Inc.**  
2620 Commerce Way, Vista, CA 92081  
1.800.822.7933 | [www.ZodiacPoolSystems.com](http://www.ZodiacPoolSystems.com)

©2014 Zodiac Pool Systems, Inc. ZODIAC® is a registered trademark of Zodiac International, S.A.S.U., used under license. All other trademarks referenced herein are the property of their respective owners.

H0576700 Rev C