

# Brandon Square



---

## FIREPIT

Installation guide and owner's manual

TECHO — BLOC

# Table of contents

|                                       |     |
|---------------------------------------|-----|
| Components.....                       | 3   |
| Overall Dimensions.....               | 4   |
| Positioning reference per layer ..... | 5   |
| Foundation preparation                |     |
| Paver surface or Concrete slab .....  | 5   |
| Compacted gravel base .....           | 5   |
| Installation of blocks .....          | 6-7 |
| Operation and maintenance .....       | 8   |
| Warranty.....                         | 9   |

## General information

**PLEASE SAVE THIS OWNER'S MANUAL FOR FUTURE REFERENCE**

Check with your municipality for regulations on the installation and use of outdoor fire pits. We also recommend that you contact your home insurance company and advise them of the acquisition of your new Techo-Bloc fire pit.

---

## IMPORTANT

This fire pit is for **OUTDOOR USE ONLY**. NEVER build a fire pit for use in a house, warehouse, gazebo, garage, or any other indoor setting.

Check with your municipality for minimum clearance distances. Make sure that there is nothing directly above the fire pit area that can be a potential fire and/or injury hazard (e.g. tree branches, awnings, patio umbrellas, electrical wires, transformers, cantilevered roof structures, etc.).

When selecting the location of your fire pit, make sure that it is located at least 20 feet away from any structure or building unless indicated otherwise by the gas fire pit (if applicable) manufacturer.

WE RECOMMEND THAT GAS FIRE PIT PRODUCTS ARE INSTALLED BY PROFESSIONALS LOCALLY LICENSED BY THE AUTHORITY HAVING JURISDICTION IN GAS PIPING. REFER TO MANUFACTURER'S INSTALLATION AND OPERATION INSTRUCTIONS.

---

## Components



A. Brandon 90 mm A  
(x20)



B. Brandon 90 mm B  
(x20)



C. Steel Insert for Wood  
fire pit. (sold separately)



D. Brandon 90 mm corner (x20)



E. Raffinato Cap 60 mm  
13" x 27"  
(pre-cut) (x6)



F. Gas kit - Natural Gas or Liquid  
Propane (sold separately)



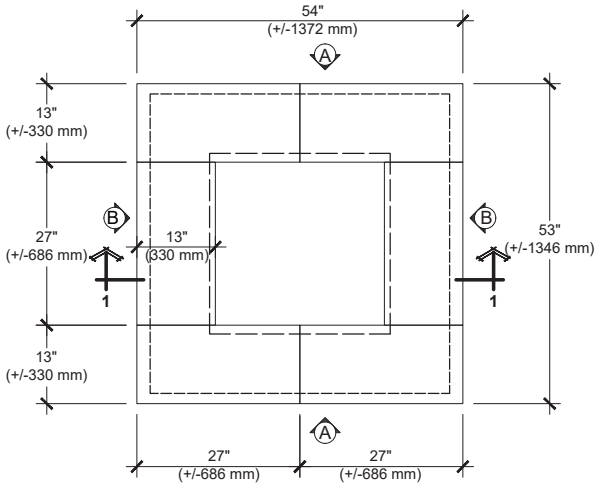
G. Smokeless Insert  
(sold separately)



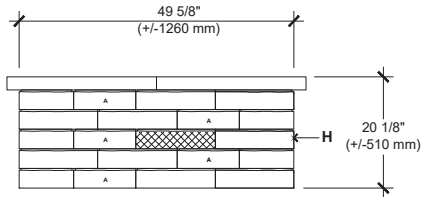
H. Outpostm Adjustable Grill  
(sold separately)

# Overall Dimensions


Below are the overall dimensions of the fire pit (inserts not shown). The height shown is the total height (including buried portion). Unless installed directly on a paver surface or concrete slab, the fire pit should be buried about 2" or 3" below finished grade.



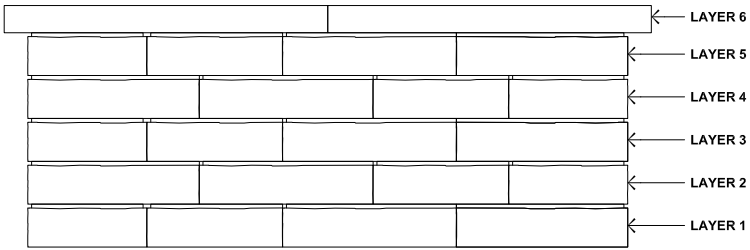
TOP VIEW



ELEVATION A

 RECOMMENDED LOCATION FOR VENTS OR IGNITION CONTROL ACCESORIES (GAS KIT);

# Positioning reference per layer



## Foundation preparation

### PAVER SURFACE OR CONCRETE SLAB

If you are building the fire pit on an existing paver surface or concrete slab, drill through the pavement to provide a 2" diameter drain hole at the lowest point. This will allow the rainwater to infiltrate into the ground. Fill the drain hole with clean stone. Go to step *Installation of blocks*.

**FOR A GAS FIRE PIT,  
PLAN THE INSTALLATION  
(GAS LINE, RISER) ACCORDINGLY  
WITH A PROFESSIONAL LOCALLY  
LICENSED BY THE AUTHORITY  
HAVING JURISDICTION IN  
GAS PIPING. REFER TO  
MANUFACTURER'S INSTALLATION  
AND OPERATION INSTRUCTIONS.**

### COMPACTED GRAVEL BASE

Mark out the area of the fire pit and excavate to accommodate 6" of well compacted, dense-graded aggregate base, a 1" layer of sand setting bed, and about 2" or 3" of fire pit wall that will be buried below ground. The aggregate base should extend at least 6" on all the sides of the fire pit walls.

It is recommended that a geotextile be laid on the top of the soil surface and up the sides of the excavated area.

Place and uniformly compact the aggregate base. The aggregate base should be compacted, for best results, using a vibratory plate compactor, or hand tamper.

Spread 1" concrete sand setting bed and level using two 1" diameter pipes and a straight edge (such as a 2"x4"). Keep in mind that the 1" setting bed will be reduced to 5/8" once the wall blocks will be set into the sand setting bed with a mallet.

**Note:** if the fire pit is being installed along with a paver installation, the aggregate base course and setting bed of pavers can be extended to be used for the fire pit installation.

# Installation of blocks

## LAYER 1

Place the first course of blocks with the narrower side of the block facing towards the center of the fire pit. Verify that no gaps are left at the outer face of the blocks. Once the first course has been aligned, use a soft-head mallet to set the blocks into the sand setting bed. Make sure that the blocks are leveled from front to back, side to side, and from block to block.

## LAYER 2 TO 5

Install the next courses as shown on the drawings and using the insert as a template (when possible) taking into consideration the requirements of the specific insert selected. Use a heat resistant concrete adhesive to glue every course to the blocks beneath it. All units should be dry and dust free before applying adhesives. Any alignment adjustments should be done quickly as the adhesive will set up in a short amount of time and the block will set in place.

## LAYER 6

(CAP INSTALLATION) - MAKE SURE THE INSERTS (WOOD OR GAS) FIT BEFORE FIXING THE COPING UNITS.

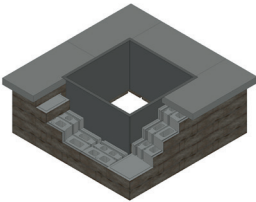
Dry lay the cap units and place the insert (wood or gas) in the center of the opening as required. Make sure that the insert flange (if applicable, e.g. for the wood inserts) rests evenly on top of the cap units and that the cap units overhang the fire pit wall in a uniform way.

Take out the insert (wood or gas) and lift up each cap unit individually leaving the others in place to act as a guide. Apply adhesive to glue every cap unit to the blocks beneath it. Put the insert back with the flange resting on top of the cap units (if applicable, e.g. for the wood inserts).

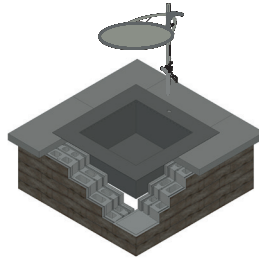
Fill the inside of the pit with  $\frac{3}{4}$ " (20 mm) clean stone to a depth of 4" (100 mm). This will allow the filtration of any water that may evacuate through the walls of the fire pit following a rainstorm.

Do not light a fire for at least 48 hours to allow any adhesive to cure properly and for potentially flammable fumes to dissipate.

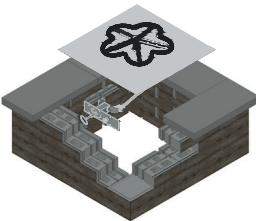
## Insert Options



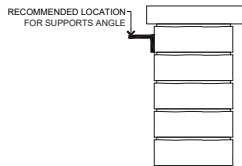
WOOD FIRE PIT SLEEVE  
INSERT INSTALLATION

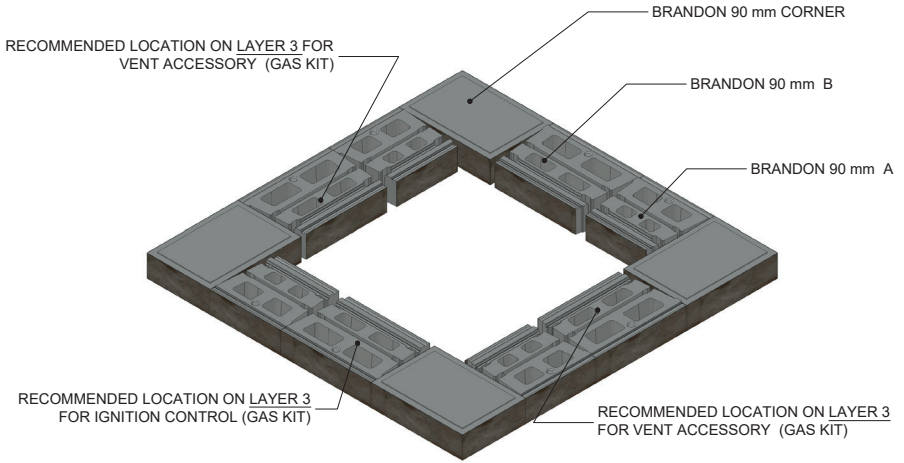


SMOKELESS INSERT AND OPTIONAL  
GRILLING SYSTEM OUTPOST™

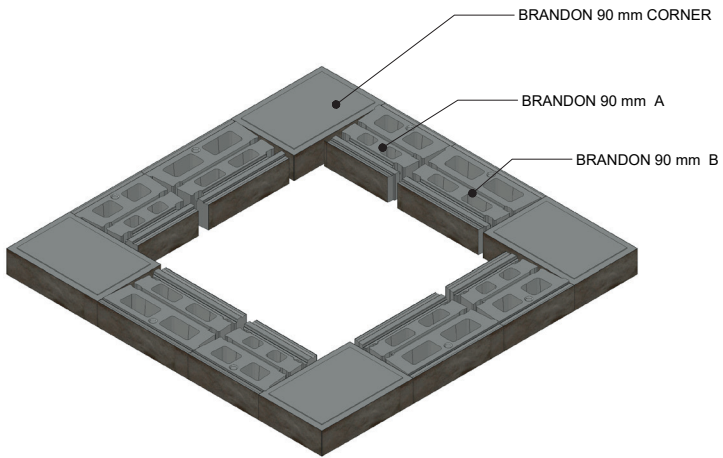


GAS KIT INSTALLATION





LAYER 1 & 3



LAYER 2 & 4

## Operation and maintenance

**FOR A GAS FIRE PIT,  
CONSULT ALSO THE MANUFACTURER  
OPERATION AND MAINTENANCE MANUAL.**

- › The firepit is not designed for large fires. Fire should be contained at least 6" away from the firepit wall blocks. Overheating could lead to heat damage to the firepit components. Use only a small amount of dry and clean hardwood for burning.
- › Allow the fire to burn out on its own unless it is an emergency case. Extinguishing an active fire with water or any other liquid may cause the metal components of the accessory kit to warp and will encourage the formation of rust.

- › Do not burn charcoals, leaves, trash, paper, cardboard, and softwoods such as pine, cedar and plywood.
- › Do not use lighter fluid, gasoline, or other fire accelerants to start or maintain fires.
- › Never touch the steel insert and flange while a fire is lit. The steel insert and flange will become extremely hot and burn the skin on contact. Wear fire resistant gloves when maintaining the fire.
- › The fire pit area must always be clear and free from any combustible materials such as gasoline, propane tanks and/or any other flammable vapors and/or liquids.
- › Always have a fire extinguisher or garden hose nearby for any potential emergency.
- › Avoid using the fire pit in windy conditions.
- › At each use, before starting a fire, remove all accumulation of ashes, wood and debris from the fire bowl and inspect the overall fire pit and accessories to ensure that it is in safe operational condition.
- › Children and pets should NEVER be left unsupervised when the fire pit is in use. We highly recommend that good fire safety measures are practiced and that you and your guests maintain a minimum distance of 3 feet away from the fire pit to avoid potential injury.
- › Do not sit, lean on or stand on the fire pit wall.
- › Ensure that the fire pit area is always clear of toys, clothing, etc.
- › Do not use the fire pit for cooking purposes unless otherwise permitted by the manufacturer.
- › Never leave an active fire unattended.
- › It is recommended to replace the clean stone at the bottom of the fire pit annually to maintain proper water filtration.



**\*HPC / TECHO-BLOC PARTNERSHIP WARRANTY**

| <b>OUTDOOR FIRE PIT COMPONENTS</b> | <b>RESIDENTIAL</b> | <b>COMMERCIAL</b> |
|------------------------------------|--------------------|-------------------|
| Fire Pit Stainless Steel Burner    | <i>Lifetime</i>    | <i>Lifetime</i>   |
| Outdoor Fireplace Burner           | <i>Lifetime</i>    | <i>Lifetime</i>   |
| Electronic Ignition Components     | 3 Years            | 1 Year            |
| Pilot Assemblies                   | 2 Years            | 1 Year            |
| Stainless Steel Components         | 5 Years            | 1 Year            |
| Flex Lines                         | 5 Years            | 1 Year            |
| Regulators                         | 3 Years            | 1 Year            |
| Outdoor Log Sets                   | 3 Years            | 3 Years           |
| Fire Pit Cover                     | 3 Years            | 1 Year            |

*\*Warranty is for parts only and does not include any labor charges that may be incurred.*

Available in wood, natural gas & liquid propane burning options.  
Visit [techo-bloc.com](http://techo-bloc.com) to discover more.

Raffinato 14" × 28" caps included. Metal fire pit insert sold separately.  
The installation of a sleeve or accessory kit will prevent damages to your fire pit.



## CANADA

### MONTREAL

5255 Albert-Millichamp Street, Saint-Hubert,  
QC J3Y 8Z8

### CHAMBLY

7800 Samuel-Hatt Street, Chambly, QC J3L 6W4

### OTTAWA

581 Somme Street, Gloucester, ON K1G 6Y7

### TORONTO

10 Freshway Dr., Vaughan, ON L4K 1S3

### TORONTO

2852 Cedar Creek Road, Ayr, ON N0B 1E0

## USA

### CINCINNATI

9950 Farr CT, Cincinnati, OH 45246

### DETROIT

2210 Scott Lake Rd., Waterford, MI 48328

### ILLINOIS

8201 31st St. W, Rock Island, IL 61201

### ILLINOIS

24312 W. Riverside Dr., Channahon, IL 60410

### INDIANA

2397 County Rd 27, Waterloo, IN 46793

### MARYLAND

6710 Binder Ln., Elkridge, MD 21075

### MASSACHUSETTS

70 East Brookfield Rd., North Brookfield, MA 01535

### MINNESOTA

4372 170th St. W, Farmington, MN 55024

### NASHVILLE

160 Center Point Rd. S, Hendersonville, TN 37077

### NEW YORK

55-65 South 4th Street., Bay Shore, NY 11706

### NORTH CAROLINA

5135 Surret Dr., Archdale, NC 27263

### OHIO

97 Industrial St., Rittman, OH 44270

### PENNSYLVANIA

852 W. Pennsylvania Ave., Pen Argyl, PA 18072

### PENNSYLVANIA

23 Quarry Rd., Douglassville, PA 19518

## CONTACT US

### TOLL FREE:

1.877.832.4625

[WWW.TECHO-BLOC.COM](http://WWW.TECHO-BLOC.COM)

### PROUD MEMBER OF



## TECHO—BLOC

Inspiring Artscapes