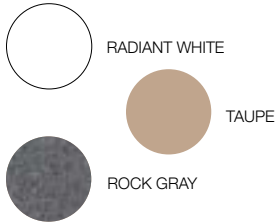


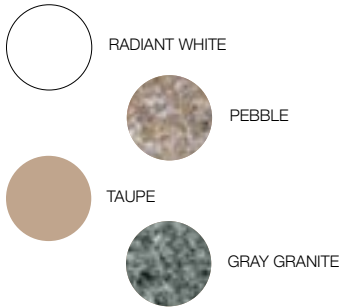
# Cantilever (606/608) Stand



## Stand Colors



## Board Colors



Due to printing technology actual color may differ.

Due to differences in material and textures, Gray Granite Diving Boards and Stands are not an exact color match to Gray Granite Slides. Please consult your S.R.Smith sales representative for more details.

All installations must comply with all applicable local and national codes and installation must be completed in accordance with S.R.Smith installation instructions.

## Compatible with:



Frontier III Board



Glas-Hide Board



FreeStyle Board



HipHop Board

- Powder-coated for increased corrosion resistance
- 6' or 8' lengths
- Available in designer colors to match your pool slide and backyard décor
- Stainless steel hardware for added corrosion resistance
- Board has a matching non-slip sanded tread
- Not recommended for salt pools. For a salt pool solution see the Salt Pool Jump System
- Salt Pool Jump System can be retrofitted on a Cantilever jig

## Cantilever Jump Stand with Frontier III Board

Model No.	Size	Color	Shipping (3 boxes)			
			Weight	Length	Width	Height
68-210-59610	6'	Taupe	52 lbs 24kg	74" 188cm	20" 51cm	3" 8cm
68-209-5962	6'	Radiant White	60 lbs 27kg	16" 41cm	14" 36cm	12" 30cm
68-210-59623	6'	Pebble*	20 lbs 10kg	33" 84cm	18" 46cm	4" 10cm
68-210-59624	6'	Gray Granite*	20 lbs 10kg	33" 84cm	18" 46cm	4" 10cm
68-210-59810	8'	Taupe	70 lbs 32kg	98" 249cm	20" 51cm	3" 8cm
68-209-5982	8'	Radiant White	60 lbs 27kg	16" 41cm	14" 36cm	12" 30cm
68-210-59823	8'	Pebble*	33 lbs 15kg	41" 104cm	18" 46cm	4" 10cm
68-210-59824	8'	Gray Granite*	33 lbs 15kg	41" 104cm	18" 46cm	4" 10cm

\* Clear tread

## Cantilever Jump Stand with Glas-Hide Board

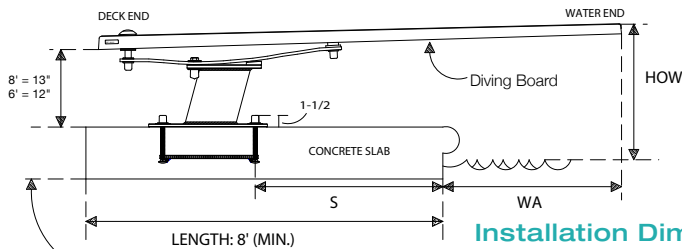
Model No.	Size	Color	Shipping (3 boxes)			
			Weight	Length	Width	Height
68-209-2062	6'	Radiant White	57 lbs 26kg	74" 188cm	20" 51cm	3" 8cm
			60 lbs 27kg	16" 41cm	14" 36cm	12" 30cm
			20 lbs 10kg	33" 84cm	18" 46cm	4" 10cm
68-209-2082	8'	Radiant White	57 lbs 26kg	98" 249cm	20" 51cm	3" 8cm
			60 lbs 27kg	16" 41cm	14" 36cm	12" 30cm
			20 lbs 10kg	41" 104cm	18" 46cm	4" 10cm

## Cantilever Jump Stand with HipHop Board

Model No.	Size	Color	Shipping (3 boxes)			
			Weight	Length	Width	Height
68-210-4162		Radiant White	60 lbs 27kg	16" 41cm	14" 36cm	12" 30cm
68-210-41624		Gray Granite	20 lbs 10kg	33" 84cm	18" 46cm	4" 10cm
68-210-41623		Sandstone	55 lbs 25kg	87" 221cm	33" 84cm	3.5" 9cm

## Cantilever Jump Stand with FreeStyle Board

Model No.	Size	Color	Shipping (3 boxes)			
			Weight	Length	Width	Height
68-210-4262		Radiant White	60 lbs 27kg	16" 41cm	14" 36cm	12" 30cm
68-210-42624		Gray Granite	20 lbs 10kg	33" 84cm	18" 46cm	4" 10cm
68-210-42623		Sandstone	55 lbs 25kg	87" 221cm	33" 84cm	3.5" 9cm



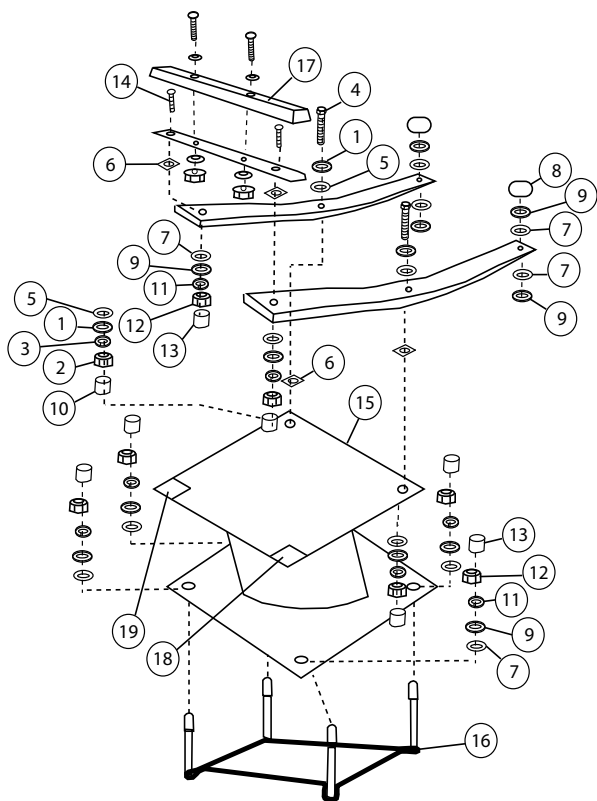
Thickness: 6" min  
Width: 4" min  
(Note: S.R. Smith cannot guarantee customer's concrete or thickness)

### Installation Dimensions

Jump board size	ANSI/NSPI-5 Pool Type	Distance for setting front bolt of jig from water's edge (S)**	Minimum overhang (WA)*	Maximum height of board above water (HOW)
6'	I	32"	18"	20"
	II	32"	18"	20"
	III	26"	24"	26"
	IV	20"	30"	30"
	V	14"	36"	40"
8'	III	45"	24"	26"
	IV	39"	30"	30"
	V	33"	36"	40"

\*S and WA dimensions are valid only in conjunction with minimum depth at point A

\*\*When coping is used do not set front bolts of jig closer than 3" from the back edge of the coping



Key	Part No.	Description	Kit A	Kit B	Kit C
A	69-209-021-SS	Cantilever Stand Base Bolt Kit			
B	69-209-020-SS	Fulcrum Bolt Kit			
C	69-209-019-SS	606/608 Spring Bolt Kit			
1	05-31-158	5/8" Flat Washer			•
2	05-31-159	5/8" Hex Nut			•
3	05-31-157	5/8" Lock Washer			•
4	05-31-156	5/8" x 2 1/4" Hex Head Bolt			•
5	05-631	5/8" x 1 3/4" Nylon Washer			•
6	05-630	5/8" x 2" Square Nylon Washer		•	•
7	05-616	1/2" x 1 1/2" Round Nylon Washer	•	•	•
8	04-608	1" Spacer, Schedule 40 Pipe			•
9	05-14-132	1/2" x 1 3/8" Flat Washer	•	•	•
10	05-600	5/8" White Rubber Nut Cap			•
11	05-14-115	1/2" Lock Washer	•	•	
12	05-14-116	1/2" Hex Nut		•	•
13	05-618	1/2" White Rubber Nut Cap	•	•	
14	05-31-170	1/2" x 1 1/2" Carriage Bolt			•
15	69-209-001 69-209-001-RG 69-209-001-TP	Cantilever Stand, White (jig included) Stand, Rock Gray (jig included) Stand, Taupe (jig included)			
16	69-209-006-SS 69-209-010-SS 69-209-011-SS	Jig w/6" bolts Jig w/9" bolts Jig w/10" bolts			
17	04-605-SS	Assembled Fulcrum (no hardware)			
18	05-620L	Plastic Tab (left)		•	
19	05-620R	Plastic Tab (right)		•	
	69-209-026 69-209-026-RG 69-209-026-TP	606 Spring Assembly, White 606 Spring Assembly, Rock Gray 606 Spring Assembly, Taupe			
	69-209-028 69-209-028-RG 69-209-028-TP	608 Spring Assembly, White 608 Spring Assembly, Rock Gray 608 Spring Assembly, Taupe			
	67-209-911-SS	Bolt Kit for diving board			
	75-209-5868-SS	Epoxy Kit with (4) 1/2" bolts			