

SPECIFICATIONS

Traditional Bullnose

9" Bullnose - 3 1/2 x 2 3/16 x 9"

384 pcs per pallet



SINGLE

Unit Weight: 4.8 lbs. Kord - 5.6 lbs. Solid
Pallet Weight: 1,883 lbs. Kord - 2,190 lbs. Solid
Coverage: 3.0 Units per lineal foot
(using 1/2" grout line)

DOUBLE

Unit Weight: 4.8 lbs. Kord - 5.6 lbs. Solid
Pallet Weight: 1,883 lbs. Kord - 2,190 lbs. Solid
Coverage: 3.0 Units per lineal foot
(using 1/2" grout line)

12" Bullnose - 3 1/2 x 2 3/16 x 11 1/2"

288 pcs per pallet



SINGLE

Unit Weight: 6.0 lbs. Kord - 7.0 lbs. Solid
Pallet Weight: 1,768 lbs. Kord - 2,056 lbs. Solid
Coverage: 3.0 Units per lineal foot
(using 1/2" grout line)

DOUBLE

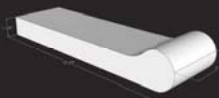
Unit Weight: 6.0 lbs. Kord - 7.0 lbs. Solid
Pallet Weight: 1,768 lbs. Kord - 2,056 lbs. Solid
Coverage: 3.0 Units per lineal foot
(using 1/2" grout line)

Specialty Bullnose

Safety Grip Bullnose - 3 5/8 x 1 1/4 x 12 1/2"

320 pcs per pallet

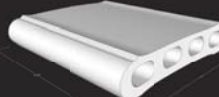
Unit Weight: 5.0 lbs. Solid
Pallet Weight: 1,613 lbs.
Available Colors: Brown Flashed, Burgundy, Dark Iron Spot, Light Iron Spot, Medium Iron Spot, Red Flashed, Rose Tan, Royal Saltillo, Sterling Grey, Sunset Red, and Pueblo
Coverage: 3.0 Units per lineal foot (using 3/8" grout line)



Capella Wallcaps - 10 x 2 x 10 5/8"

120 pcs per pallet

Unit Weight: 11 lbs.
Pallet Weight: 1,327 lbs.
Available Colors: Sunset Red, Red Flashed, Burgundy, Saltillo, Light Iron Spot, Medium Iron Spot, Dark Iron Spot (Plano also available in Sterling Grey)
Coverage: 1.1 Units per lineal foot (using 1/2" grout line)

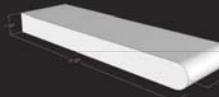


Also available in 8" Capella, and 8"/10" Plano, weights vary by size

Retrofit Bullnose - 3 5/8 x 1 1/4 x 12 1/2"

400 pcs per pallet

Unit Weight: 5.0 lbs. Solid
Available Colors: Sunset Red, Red Flashed, Manufactured Used*, Manufactured Used - white only*
Coverage: 3.0 Units per lineal foot (using 3/8" grout line)



Profinish Bullnose - 3 1/2 x 2 3/16 x 11 1/2"

6 pcs per box

Unit Weight: 6.0 lbs. Solid
Available Colors: Sunset Red, Red Flashed, Burgundy, Medium Iron Spot, Sterling Grey, Brown Flash, Pueblo, Manufactured Used, Manufactured Used - white only, Dark Iron Spot, Light Iron Spot



Texas Bullnose - 7 x 2 3/16 x 9" (9 inch) 7 x 2 3/16 x 11 1/2" (12 inch)

150 pcs per pallet

Unit Weight: 8.4 lbs. (9 inch) 10.6 lbs. (12 inch)
Available Colors: Sunset Red, Red Flashed, Burgundy, Medium Iron Spot, Sterling Grey, Brown Flash, Pueblo, Dark Iron Spot, Light Iron Spot



Also available in tumbled versions



STRATHMORE BUILDING, UCLA; UCLA BLEND



PRIVATE RESIDENCE, SUNSET RED BULLNOSE

BULLNOSE

• A N D W A L L C A P S

PACIFIC CLAY
PRODUCTS

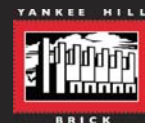


PRIVATE RESIDENCE, DARK IRON SPOT BULLNOSE

14741 Lake Street Lake Elsinore, CA 92530

phone: 951.674.2131 fax: 951.674.6383

www.pacificclay.com



F I N E Q U A L I T Y C L A Y B R I C K , S I N C E 1 8 9 2

Standard colors available for all products listed below (except Retrofit Bullnose, ProFinish and Capella Wallcaps): Brown Flashed, Burgundy, Dark Iron Spot, Light Iron Spot, Manufactured Used, Manufactured Used White Only, Medium Iron Spot, Pueblo, Red Flashed, Rose Tan, Royal Saltillo, Sterling Grey and Sunset Red.

All Bullnose meet or exceed the requirements of ASTM C-902 and are Die Skin in texture.

*Manufactured Used and Manufactured Used - white only are not recommended to be used around pools.

Custom Colors and sizes available (minimum order quantities apply).
Call Pacific Clay for literature on our full family of products such as Bullnose, Face Brick, and Thin Line.
Bricks in this brochure were photographed and printed to match the original brick as closely as possible; however, production runs vary slightly in color. Color ranges occur in each production run.

Pacific Clay's colors are produced from natural clays - color ranges are inherent in the product and should be sampled accordingly. Weights listed are averages; individual bricks may vary in dimension and weight while maintaining accordance with ASTM specifications.

Pacific Clay Products maintains the right to revise packaging and products inventoried.



2017

For the first time, the brick industry is now able to meet the exacting demands of the mind's eye.



A NEW FRONTIER IN COLOR

Pacific Clay has invested an extensive amount of time and capital in developing a new proprietary process for bringing clay's potential to the forefront. Changing demands in color have brought forth this evolution in brick production processes to meet those needs, unlocking the true potential of clay and moving beyond the standardized status quo that had previously defined the brick industry. Brick is no longer a limiting factor in the demands and vision of the designer, or the consumer. With Pacific Clay Products, brick now conforms to design. Our design philosophy is one of attention to color theory. Color communicates to people on a subliminal level, and many designers and consumers make both educated and individual taste judgments about color. Pacific Clay's new production process allows for full tonal ranges of all of our existing colors, across all product lines. This creates a logical structure for our brick colors, making our bricks powerful tools for designers. Whether it be a unique solid color, elegant gradients or exciting never before seen blends, Pacific Clay Brick now opens up doors, and possibilities for the designer and consumer alike, that for decades had remained closed.

Pacific Clay Products' Poolside Collection allows you to unify image, explore solutions, achieve an impressive statement, and establish that very special personality you look for in a pool. You now have unlimited free reign to create your own masterpiece from a wide selection of carefully designed colors, patterns, shapes and sizes. Our Poolside Collection offers a discriminating line of pavers and bullnose brick.

The Pacific Clay Products' Poolside Collection is the perfect answer when seeking rich, earthy colors, patterns and exquisite textures. Utilized independently, or combined theme, the Pacific Clay Products' Poolside Collection is an excellent choice for exterior or interior designs.



PRIVATE RESIDENCE, RED FLASHED BULLNOSE



PRIVATE RESIDENCE, SUNSET RED BULLNOSE

Pacific Clay is long known for its quality, crafted bullnose brick. Combining design, elegance and safety, these products offer you the finest in hardscape design and pool coping materials.

CAPELLA WALLCAPS

Inspired by the warmth and elegance of Italian architecture and landscaping, Pacific Clay used its creative imagination to produce Capella Wallcaps. Capella offers all of the enduring qualities of natural clay. Its inherent durability and color integrity will provide years of maintenance free service through all types of climactic conditions. Look for Capella in two styles, Capella and Plano, along with several attractive colors which match Pacific Clay's existing family line of brick products.



STANDARD COLORS

The Pacific Clay Products' Bullnose family offers distinctive design flexibility and adds enduring beauty and durability in any poolside application. Pacific Clay Bullnose bricks are low in absorption, easy to clean and require little maintenance. Bullnose are available in 9" and 12" lengths, single and double ended and cored and solid bodies.

TEXAS BULLNOSE



SINGLE BULLNOSE



DOUBLE BULLNOSE



SAFETY GRIP BULLNOSE

A craftsman-directed design, Safety Grip Bullnose combines the beauty and versatility of fired clay brick with the safety and labor saving workability of conventional concrete coping. Safety Grip Bullnose is longer (12-1/2") and thinner (1-1/4") than traditional bullnose, so it easily replaces concrete coping without removal or modification of the existing bond beam. It requires no cutting or grinding. Just remove the old concrete coping, clean the setting bed, and start laying Safety Grip Bullnose. More importantly, the unique design of the Safety Grip bulb end provides a safer, superior grip for pool users than traditional bullnose.



PRO FINISH BULLNOSE

The Pro-Finish Bullnose by Pacific Clay is an ingenious detail product designed to not only enhance the beauty of brick stair treads, landscaping walls, and planter boxes, but also as an economic labor-saving product for the contractor and mason.



RETROFIT BULLNOSE

Retrofit Bullnose offers the charm of real fired clay brick as well as the low cost installation time of standard concrete pool copings. Because it has been designed with direct input from contractors and distributors, it's easier to install and is more flexible in design consideration than ordinary bullnose. Retrofit is longer (12-1/2") and thinner (1-1/4") than tradition bullnose, so it easily replaces concrete coping without having to cut the bullnose or grind the bond beam. Retrofit Bullnose offers a flat, round end (as in traditional bullnose) for more linear aesthetics.



Please see the back cover for the complete specifications. *Wide Color Variation