

REFURBISHING AIDS

POP-UP HEAD EXTENDER

PUHE-1 \$9.27, PUHE-2 \$9.27
White Gray

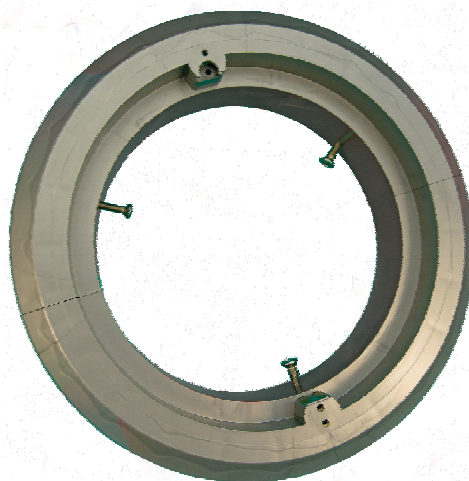


- ◆ Eliminates prep work
- ◆ Fits most size heads with removable center for larger heads
- ◆ Cover prevents surface material from getting in heads
- ◆ No need to remove heads: Just glue down & remove protective cover after plastering

LIGHT ADAPTER

See next page for more details

LAD - 3
LAD - 4



Return Plumbing Extenders

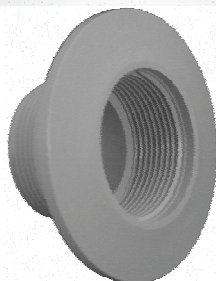
RPE-1.5S \$5.75

Extends 1 1/2" Standard Female Threaded Fittings by 3/4" to 1".



RPE-1.5T \$6.25

Extends 1 1/2" Trim Mount Eyeball Fittings by 3/4" to 1".



RPE-1.5F \$5.75

Extends 1 1/2" Flush Mount Eyeball Fittings by 3/4" to 1".



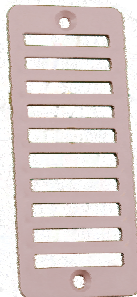
- ◆ Ideal for pools being resurfaced.
- ◆ Extends IN-THE-WALL fittings to compensate for additional surface's thickness.
- ◆ White PVC material.

IMPORTANT: When installing a Return Plumbing Extender be sure to seal the male threads with Teflon tape or silicone so as to avoid "behind the surface leaks".

GUTTER DRAIN GRATES

GDG-1 \$1.34, GDG-6 \$7.50

- ◆ **2" X 4"** - GDG-1
- ◆ Gutter Drain Grate
- ◆ White ABS construction.



- ◆ **2" X 6"** - GDG-6
- ◆ Gutter Drain Grate
- ◆ White ABS construction.

GUTTER DRAIN EXTENDER

GDE-1 \$7.35

- ◆ Extends Standard 2" x 4" gutter drain by 1/2".
- ◆ Holds itself in position while glue or silicone dries.
- ◆ Receives standard 2" x 4" grates.
- ◆ White ABS construction.



GUTTER DRAIN EXTENSION KIT

GDK-1 \$8.40

Includes:

- ◆ 1 ea. GDE-1
- ◆ 1 ea. GDG-1
- ◆ 2 ea. Stainless Steel Screws.
- ◆ Completely Assembled

