

FlowVis®

flow meter



Know the **FLOW**

FlowVis® is a revolution in reliable flow measurement. It is the most advanced, affordable, and reliable precision flow meter designed specifically for pools, spas, fountains, and water features.



Manufactured in the U.S.A



Know the Flow

Every now and again, a great new idea results in a product that has people saying "Now why didn't I think of that?". The patent pending FlowVis® from H₂flow is just such a product. It is a revolutionary, affordable, and highly accurate flow meter that guarantees you will **Know the Flow**.

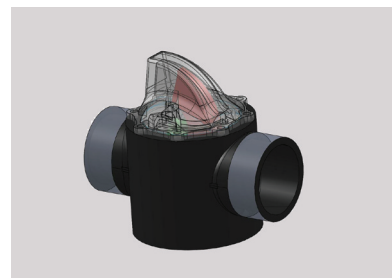
FlowVis® is more than a flow meter; it is also a fully functioning check valve. As flow increases and decreases, the check valve's flapper swings within its range of motion. A specifically designed calibration spring, indicating arm, and an extended height valve body lid constitute the fundamentals of the FlowVis® design concept.

FlowVis® is the first flow meter to be tested and certified to NSF 50. The process confirmed average accuracy was within just 2.01%* between 20 and 110 GPM across all certified models. A significant premium would normally be paid for this level of precision; however, FlowVis® costs far less than other flow meters that come even close to this level of performance.

A factor that plagues the installation of flow meters is the manufacturers' stated need to have a significant length of straight pipe available. Most often this is 15 x the pipe diameter. So, for a 2.5" diameter pipe, this would require 37.5" of straight pipe; anything less will induce even greater inaccuracy. FlowVis® has no such restrictions; you can install it directly between two 90 degree elbows and maintain the same amazing accuracy!

Saving energy using variable speed pumps is only possible if you know the flow. Setting the pump's speed without an accurate measurement of flow is akin to driving a car without a speedometer.

* Specific testing data available on written request



FlowVis® is available in two configurations:

1. A retrofit kit that installs to a pre-existing Jandy® or Praher 2" x 2.5" check valve assembly
2. A complete pre-assembled check valve assembly with FlowVis®

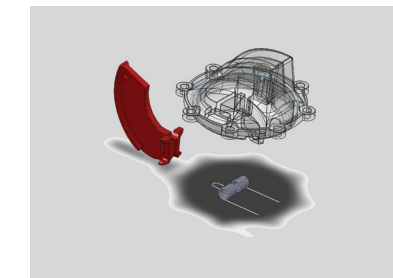
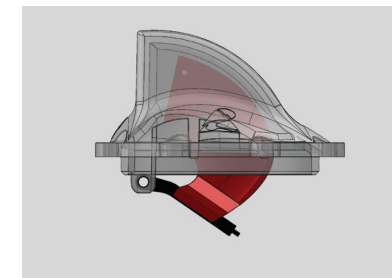
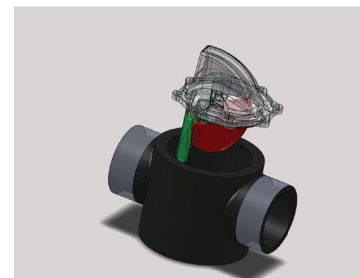
Unlike other flow meters, the position in which FlowVis® is installed (horizontal, vertical or relative to elbows and tees), has zero effect on its accuracy.

Retrofittable

What makes FlowVis® different?

Pool installers, owners, and operators finally have a flow meter that they can rely on. Accuracy, reliability, and longevity are key among a list of unique features that include:

- Combined functionality of flow meter and check valve
- Average accuracy of 2.01% between 20 - 110 GPM
- NSF 50 for complete FlowVis® model (FV-C)
- Installation flexibility. No requirement for 15x straight pipe diameter. Installs horizontally, vertically, or even upside down.
- Clear, easy to read scale in GPM or optional LPM with key velocity points (FPS)
- Installs in minutes
- No calibration required
- Unique design results in maintained accuracy even with entrained air caused by suction leaks
- Manufactured in the USA
- 5-year breakage warranty
- NSF Certified to 50 psi
- Design life of 15 years with a spring replacement every 7 years
- Head Loss: 0.77 psi at 20 GPM and 2.23 psi at 110 GPM on 2" pipe. 0.71 at 21.3 GPM and 2.37 psi at 112.6 GPM on 2.5" pipe
- Consumes less than 0.2% additional motor power over having no check valve, e.g., 3 watts on a 2 HP pump
- Can be used on 3" pipe if flow rate is 110 GPM or less



Built to Last

FlowVis® is built to last. Its robust, yet unobtrusive design means that unlike competing flow meters, FlowVis® won't get kicked, tripped over, or broken. In fact, we're so confident in the durability of FlowVis® that the product has a 5-year warranty on breakage!

Unlike Pitot tube / Rotameter style devices, FlowVis® will not stick, bounce, or provide inaccurate readings of flow. There are no saddle clamps to corrode, flat rubber seals to deteriorate, or small holes to become blocked.

Save Money. Save Energy.

- FlowVis® provides a precise, easy-to-read flow rate
- Maximize energy savings by slowing the pump to its lowest required speed for pool sanitation
- Allows precise and repeatable valve positioning for perfect water feature operation

Installation

- No plumbing restrictions for precise flow measurement; install next to elbows, tees, etc. with little or no degradation in performance
- Can be installed in any position
- Two options - 1) retrofit kit for existing Jandy® or Praher 2" x 2.5" check valve or 2) a complete valve assembly with FlowVis®
- Consumes less plumbing space than individual check valve and flow meter combination

Pipe Size, Flow Range, and Model Options

FlowVis® Models

Retrofit kit for existing Jandy® or Praher valve	Retrofit kit for existing Jandy® or Praher valve	Complete FlowVis® including valve body	Complete FlowVis® including valve body	Pipe Size	Model
X				2 by 2.5"	FVJ-R
	X			1.5"	FVJ-R-15
		X		2 by 2.5"	FV-C
			X	1.5"	FV-C-15

NOTE: When used on 1.5" piping, installer will be required to provide and fit quantity two, 2" to 1.5" reducing bushings.



H₂flow Controls, Inc. • 3545 Silica Road, Sylvania, OH 43560 USA
 www.h2flow.net • Tel: 888 635 0296 • Fax: 419 517 9900 • E-mail: sales@h2flow.net

FlowVis® is a design by Dr. Richard DeVerse of Kona Labs, Inc. The FlowVis® name is a registered trademark of H2flow Controls, Inc. Any use or reproduction of the FlowVis® name or of associated documents, literature, or media, is strictly forbidden without the expressed written consent of H2flow Controls, Inc., its owners, and/or officers.



FV2.4