

MADE
IN THE
USA 

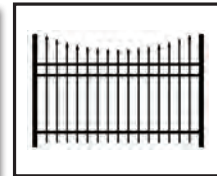
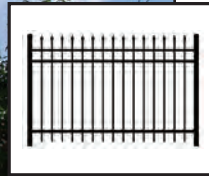
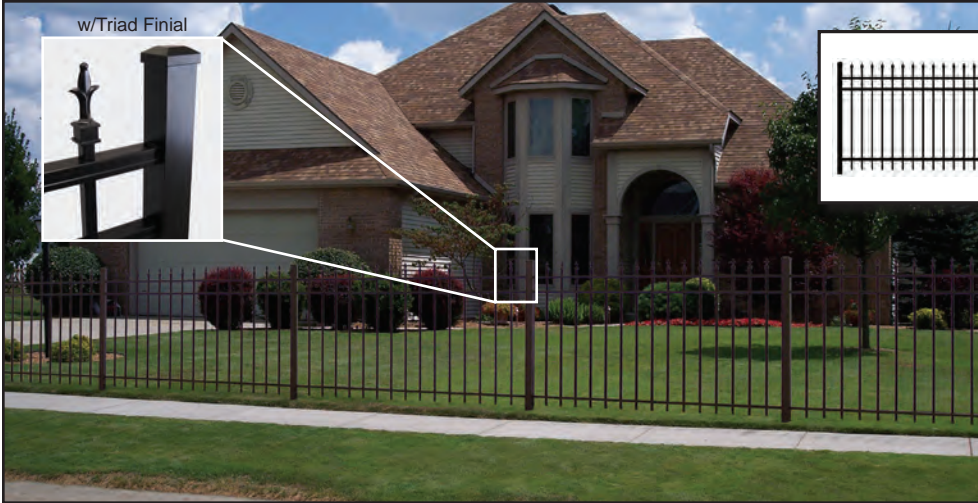


**3000 RESIDENTIAL • 4000 COMMERCIAL
ALUMINUM FENCE SYSTEMS
• LIFETIME LIMITED WARRANTY •**



3000 SERIES

- LIFETIME LIMITED WARRANTY -



36" and 42" Heights
Not Available

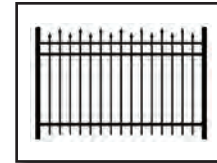
36" and 42" Heights
Not Available

MODEL 3131

3 RAIL - WITH SPEARS

Heights: 36", 42", 48" & 60"

Length: 6' Sections

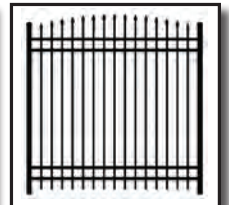
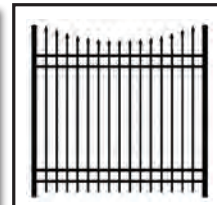
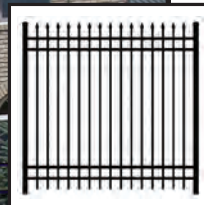
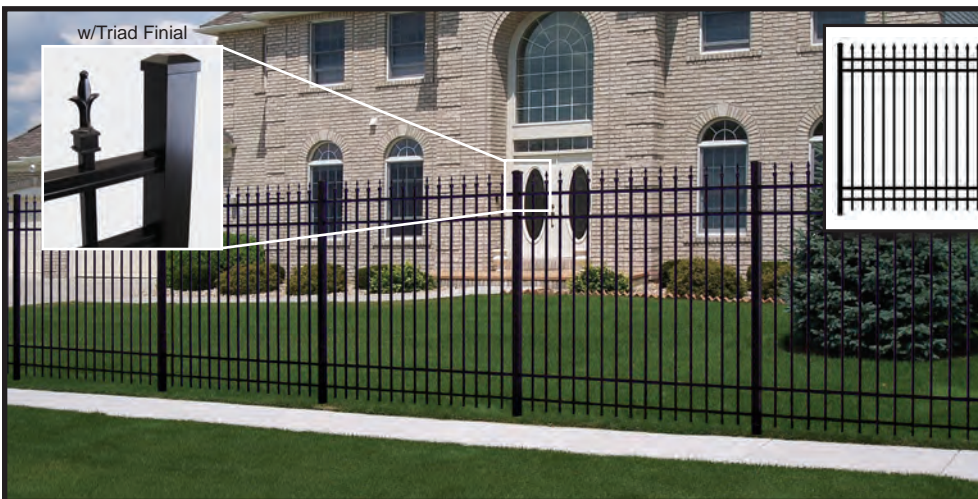


MODEL 3132

3 RAIL - WITH ALTERNATING SPEARS

Heights: 36", 42", 48" & 60"

Length: 6' Sections



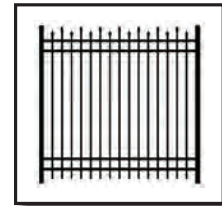
MODEL 3141

4 RAIL - WITH SPEARS

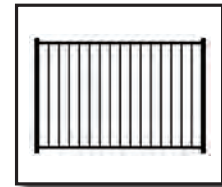
Height: 72"

Length: 6' Sections

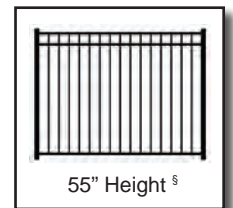
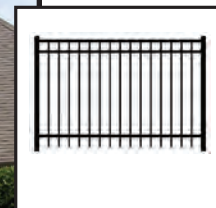
RESIDENTIAL ALUMINUM FENCE SYSTEM



MODEL 3142
 4 RAIL - WITH ALTERNATING SPEARS
 Height: 72"
 Length: 6' Sections



MODEL 3220[§]
 2 RAIL - FLAT TOP
 Height: 48"[§]
 Length: 6' Sections



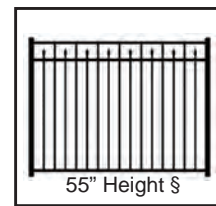
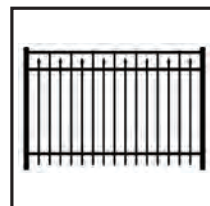
MODEL 3230
 3 RAIL - FLAT TOP
 Heights: 36", 42", 48", 55"[§] & 60"
 Length: 6' Sections

[§] Meets National Pool Code Requirements for Height and Spacing. Check Local Pool Code Requirements.



3000 SERIES

- LIFETIME LIMITED WARRANTY -

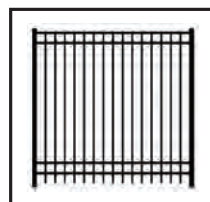


MODEL 3233

3 RAIL - FLAT TOP WITH ALTERNATING SPEARS

Heights: 36", 42", 48", 55"§ & 60"

Length: 6' Sections

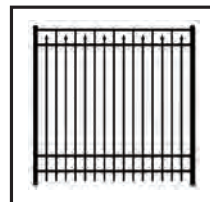


MODEL 3240

4 RAIL - FLAT TOP

Height: 72"

Length: 6' Sections



MODEL 3243

4 RAIL - FLAT TOP WITH ALTERNATING SPEARS

Height: 72"

Length: 6' Sections

§ Meets National Pool Code Requirements for Height and Spacing. Check Local Pool Code Requirements.

- 3000 SERIES - FEATURES & BENEFITS

- Screwless Panels
Hidden Picket Fasteners (Patent #US 7,152,849 B2)
Notched Rails
- Standard Sections Rack 24" in 6'
Double Punched Sections Optional
- Verified AAMA 2604 Compliant
Powder Coated Aluminum Fence
Posts: 6063-T6; Rails: 6063-T6;
Pickets: 6063-T52
- Gates - All Rails & Pickets Welded



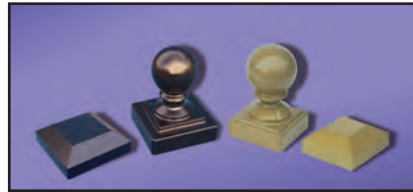
NO UNSIGHTLY SCREWS!

- Assembled Sections for Quick Installation
- Finials: Spear (Standard); Quad & Triad (Optional)
- 9 Fence Models, 6 Heights & 12 Standard Colors
- Lifetime Limited Warranty
- All Regis 3000 Series Sections are Shipped in Our Fence Stacker Storage System
 - Every Fence Stacker Unit is a Fully Enclosed Six-sided Crate with Each Vertical Section in a Plastic Sleeve
 - Safe Shipping • Convenient Storage • Easy Access

- 3000 SERIES ACCESSORIES -



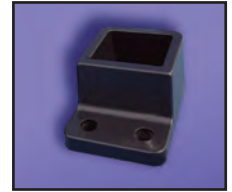
FINIALS
Quad (optional) Triad (optional) Spear (standard)



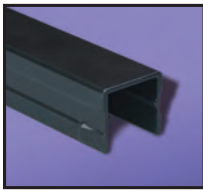
POST CAPS
Flat (standard) Ball (optional)



SWIVEL RAIL MOUNT



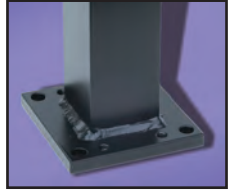
WALL RAIL MOUNT



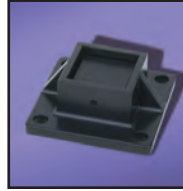
RAIL
Notched



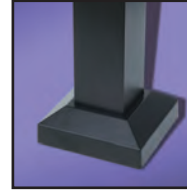
RING KIT
(optional)



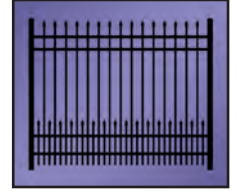
WELDED PLATE OPTION



ALUMINUM POST MOUNT



POST FLAIR
(Welded plate only)



SHORT PICKET OPTION
(Short Picket Option goes to the Midrail on 36" and 42" Heights)

STANDARD COLORS

12 Standard AAMA 2604 Colors available, custom AAMA 2604 colors and AAMA 2605 colors are all special order.

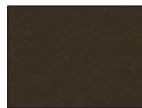
Colors shown are a close representation of the true color. Please consult actual samples for accurate powder coating colors.



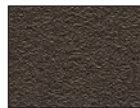
Satin Black



Black Fine Texture



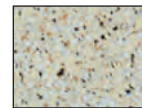
Ninety Bronze



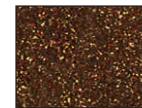
Bronze Fine Texture



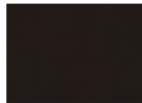
White Fine Texture



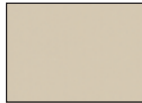
Sandy Shore



Speckled Walnut



Chocolate



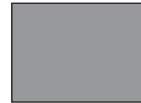
Gloss Beige



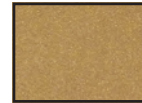
Gloss White



Brown Fine Texture



Silver



*Gold Accent Fine Texture
*Upcharge May Apply

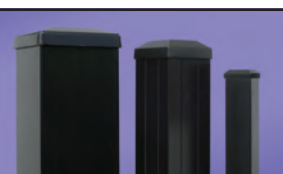
- WALK GATE SPECIFICATIONS - MATCHING GATE SYSTEM



Self Closing Hinges



Lokk Latch Deluxe



6" Gate Posts
4" 2"

Regis Gates use Non-corrosive Hardware. Refer to Regis Entry Gates Brochure for Larger Models.



U-FRAME GATE

- Gate Heights: 36", 42", 48", 60", 72"
- Gate Widths: 36", 42", 48", 60", 72"
- Top & Mid Rails: 1 1/8" (.100") w x 1" (.100") h
- Bottom Rail: 1 1/2" w x 3" h (.125")
- Side Rails: 1 1/2" x 1 1/2" (.125")
- Pickets: 5/8" x 5/8" (.045")
- Picket Spacing: Less than 4" (Divided Evenly to Reach Equal End Spacing)
- Gate Options: Single Arch, Continuous Arch (for Double Gates), Designer Arch (for Double Gates over 6' Wide)



POOL GATE

(with arch option)

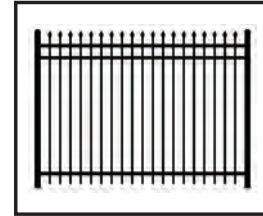
- Gate Heights: 3220 - 48"; 3233 - 55"
3230 - 55"
- Gate Widths: 36", 42", 48", 60", 72"
- Gate Rails: 1 1/8" (.125") w x 1" (.170") h
- Side Rails: 1 1/2" x 1 1/2" (.125")
- Pickets: 5/8" x 5/8" (.045")
- Picket Spacing: Less than 4" (Divided Evenly to Reach Equal End Spacing)
- Gate Options: Single Arch, Continuous Arch (for Double Gates), Designer Arch (for Double Gates over 6' Wide)

* Includes Bracing on Corners.

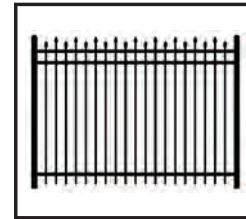


4000 SERIES

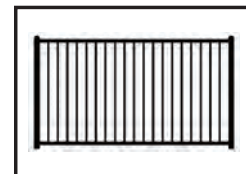
- LIFETIME LIMITED WARRANTY -



MODEL 4131
3 RAIL - WITH SPEARS
Heights: 48", 60" & 72"
Length: 8' Sections



MODEL 4132
3 RAIL - WITH ALTERNATING SPEARS
Heights: 48", 60" & 72"
Length: 8' Sections

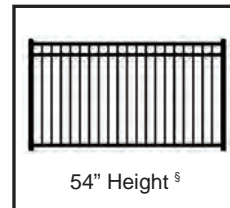
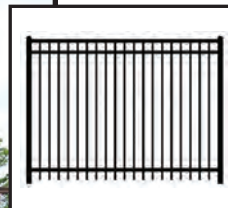
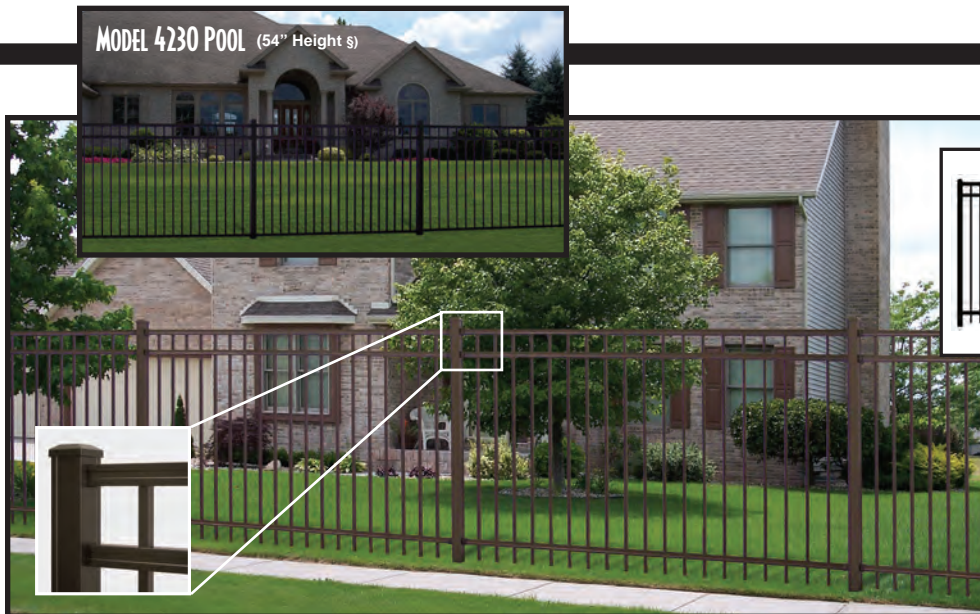


MODEL 4220
2 RAIL - FLAT TOP
Heights: 48^{1/2}"[§] & 54"[§]
Length: 8' Sections

[§] Meets National Pool Code Requirements for Height and Spacing. Check Local Pool Code Requirements.

COMMERCIAL ALUMINUM FENCE SYSTEM

MODEL 4230 POOL (54" Height §)

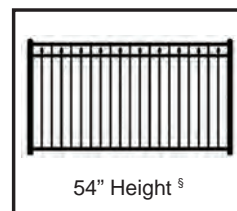
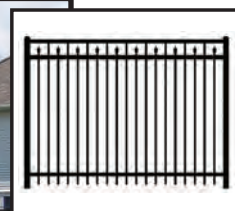
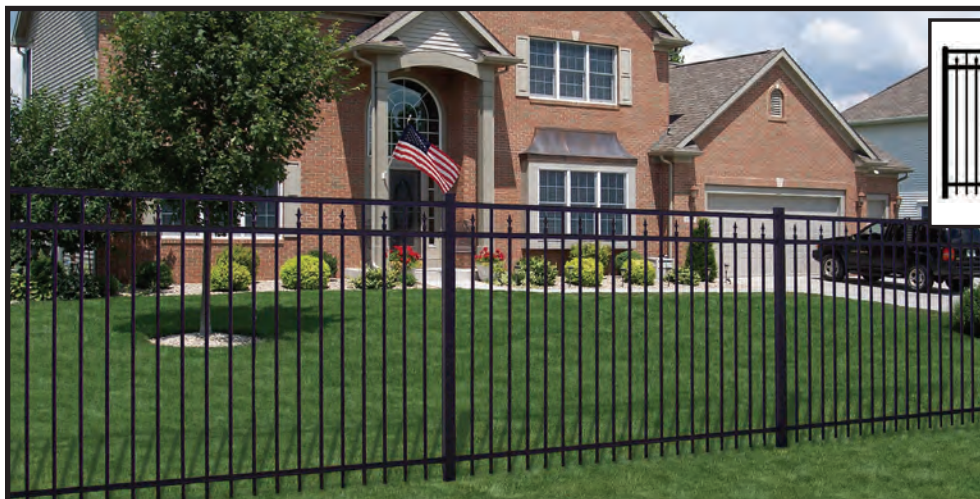


MODEL 4230

3 RAIL - FLAT TOP

Heights: 48", 54"§, 60" & 72"

Length: 8' Sections



MODEL 4233

3 RAIL - FLAT TOP WITH ALTERNATING SPEARS

Heights: 48", 54"§, 60" & 72"

Length: 8' Sections

§ Meets National Pool Code Requirements for Height and Spacing. Check Local Pool Code Requirements.



4000 SERIES

- FEATURES & BENEFITS -

- F - 6063-T6: Posts & Rails; 6063-T52: Pickets.
- B- **Higher Quality Aluminum... A Great Value.**

- F - Custom Blended Super Durable Polyester TGIC Powder Coating.
- B- **Verified AAMA 2604 Compliance.**

- F - Verified AAMA 2604 Compliance.
- B- **Premium Architectural Grade Durability.**

- F - Custom Colors Available.
- B- **Unlimited Color Choices.**

- F - Hidden E-Clip Picket Fastener. (Patent #US 7,152,849 B2)
- B- **No Unsightly Screws!**

- F - Spear, Quad or Triad Finials.
- B- **Decorative Choices.**

- F - Assembled Sections.
- B- **Saves Time... for Easier Installation.**

- F - Secure Factory Packaging.
- B- **Eliminate Freight Damage.**

- F - Lifetime Limited Warranty.
- B- **Peace of Mind... Lasts for Decades.**

- F - Matching Gates with Hardware.
- B- **Esthetically Pleasing... Easy to Adjust... Can Be Securely Locked.**

4000 SERIES

- Standard (Routed) Sections - Rack 20" in 8'
- 5 Fence Models, 5 Heights, 12 Standard Colors
- Gates - All Rails & Pickets are Welded



4000 FINIALS

- Quad (optional)
- Triad (optional)
- Spear (standard)



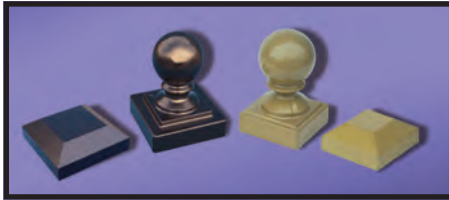
STANDARD COLORS

12 Standard AAMA 2604 Colors available, custom AAMA 2604 colors and AAMA 2605 colors are all special order.



Colors shown are a close representation of the true color. Please consult actual samples for accurate powder coating colors.

ACCESSORIES



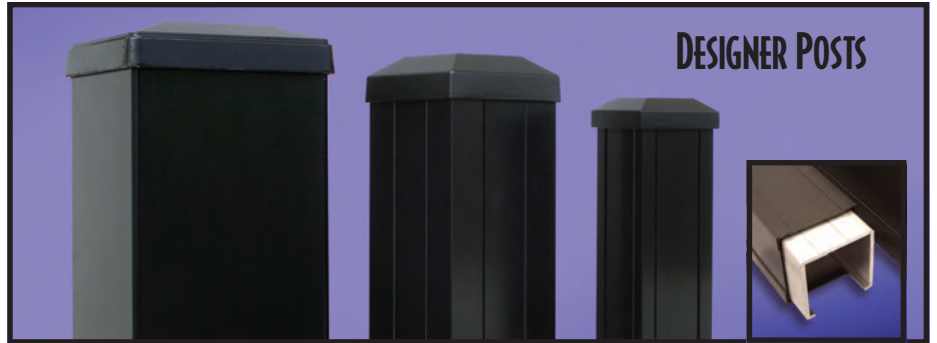
POST CAPS

Flat (standard) Ball (optional)



RING KIT

(Optional)



DESIGNER POSTS

6" x 6"

4" x 4"

2 1/2" x 2 1/2"

Aluminum Insert
2 1/2" Aluminum Insert works with
.065" wall posts only.

TWO SYSTEMS AVAILABLE FOR 3000 AND 4000



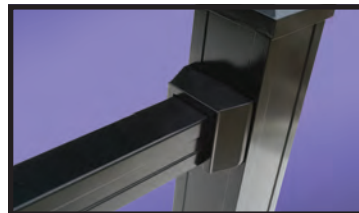
ROUTED RAIL SYSTEM



BRACKETED SYSTEM



HIDDEN SCREW RAIL MOUNT



WALL MOUNT SYSTEM



SWIVEL RAIL MOUNT



HIDDEN E-CLIP FASTENERS

(Patent #US 7,152,849 B2)

- WALK GATE SPECIFICATIONS - MATCHING GATE SYSTEM

Regis Gates use
Non-corrosive Hardware.
Refer to Regis Entry Gates
Brochure for Larger Models.



Self Closing
Hinges



Lokk Latch
Deluxe



Gate Posts
6" 4" 2 1/2"



U-FRAME GATE

Gate Heights: 48", 60", 72"
Gate Widths: 36", 42", 48", 60", 72"
Top & Mid Rails: 1 1/4" (.070") w x 1 1/2" (.110") h
Bottom Rail: 1 1/2" w x 3" h (.125")
Side Rails: 1 1/2" x 1 1/2" (.125")
Pickets: 3/4" x 3/4"
Picket Spacing: Less than 4" (Divided Evenly to
Reach Equal End Spacing)
Gate Options: Single Arch,
Continuous Arch (for Double Gates),
Designer Arch (for Double Gates over 6' Wide)



POOL GATE

(with arch option)

Gate Heights: 4220 - 48 1/2"
4230 - 54"; 4233 - 54"
Gate Widths: 36", 42", 48", 60", 72"
Rails: 1 1/4" (.070") w x 1 1/2" (.110") h
Side Rails: 1 1/2" x 1 1/2" (.125")
Pickets: 3/4" x 3/4"
Picket Spacing: Less than 4" (Divided Evenly to
Reach Equal End Spacing)
Gate Options: Single Arch,
Continuous Arch (for Double Gates),
Designer Arch (for Double Gates over 6' Wide)

* Includes Bracing on Corners.



ARCHED PICKET ALUMINUM FENCE SYSTEMS



HEIGHTS
LENGTHS
STANDARD FINIALS
STANDARD POSTS
HEAVY DUTY POSTS
POST CAPS
RAILS
PICKETS
PICKET SPACING

MODEL 3124

36", 42", & 48"
6' Sections (Sections Do Not Rack)
Spear, Quad, & Triad
2" x 2" (.060")
2" x 2" (.090") & 2" x 2" (.125")
Flat & Ball
1 1/8" (.065") w x 1" (.085") h
5/8" x 5/8" (.045")
3.792" Between Pickets

MODEL 4124

36", 42", & 48"
8' Sections (Sections Do Not Rack)
Spear, Quad, & Triad
2 1/2" x 2 1/2" (.065")
2 1/2" x 2 1/2" (.090") & 2 1/2" x 2 1/2" (.125")
Flat & Ball
1 1/4" (.070") w x 1 1/2" (.110") h
3/4" x 3/4"
3.963" Between Pickets

Available in 12 Standard Colors.
See Page 8

POWDER COATING



1

The raw premium-grade aluminum is inspected to be free of blemishes and is not exposed to the outdoor elements.



2

The product enters a heated acidic cleaning stage to remove extrusion debris and fabrication oils.



3-6

CLEAN: City water rinse
CLEANER: Recycling reverse osmosis water rinse
CLEANEST: Pure reverse osmosis water rinse
SEALER: Dried-in-place aluminum sealer



7-8

A 200 MPH air blast removes water drops from the pre-treated aluminum. A convection oven completes the dry-off process.



9

Powder is applied with 18 automated and 2 manual spray guns. Compressed process air is dried to -35°F Dew Point for superior adhesion.



10

The powder coating is then bonded and adhered to the aluminum sub-straight in a 400 degree cure stage.



The powder coating application booth produces zero VOC emissions. Powder is stored and applied in a climate controlled positive pressure environmental room. Ten pre-treat system titration checks twice per shift maintain system parameters and ten QC checks are completed every hour on product coming off the powder-coating line. Parts are not touched by human hands during the pre-treat, dry-off, application and cure process to maintain ultimate cleanliness of powder-coated parts.



DSI is a PCI 4000 certified and verified AAMA 2604 and AAMA 2605 compliant powder coating applicator. The powder coating process is accredited by the American Architectural Manufacturing Association and the Powder Coating Institute. Our powder coating is custom blended from a Super Durable Polyester TGIC (Triglycidyl Isocyanurate) resin-base, using premium pigmentation to meet AAMA 2604 specifications. Our AAMA 2605 is a fluorocarbon polymer resin system.





- SPECIFICATIONS -

- 3000 SERIES -

Styles:	3131	3132	3141	3142	3220	3230	3233	3240	3243
Fence Heights:									
36"	◆	◆				◆	◆		
42"	◆	◆				◆	◆		
48"	◆	◆			§	◆	◆		
§55"						◆	◆		
60"	◆	◆				◆	◆		
72"			◆	◆				◆	◆
Section Length:									
6' Centers	◆	◆	◆	◆	◆	◆	◆	◆	◆
Standard Posts:									
2" x 2" (.060")	◆	◆			◆	◆	◆		
2" x 2" (.090")			◆	◆				◆	◆
Heavy Duty Posts:									
2" x 2" (.125")	◆	◆	◆	◆	◆	◆	◆	◆	◆
Gate Posts:									
2" x 2" (.060") w/Inserts = .185" Wall	◆	◆			◆	◆	◆		
2" x 2" (.090") w/Inserts = .215" Wall	◆	◆	◆	◆	◆	◆	◆	◆	◆
2" x 2" (.125")	◆	◆	◆	◆	◆	◆	◆	◆	◆
4" x 4" (.125")	◆	◆	◆	◆	◆	◆	◆	◆	◆
6" x 6" (.185")	◆	◆	◆	◆	◆	◆	◆	◆	◆
Post Caps:									
Flat (Standard) 2", 4", 6"	◆	◆	◆	◆	◆	◆	◆	◆	◆
Ball (Optional) 2", 4"	◆	◆	◆	◆	◆	◆	◆	◆	◆
Rails:									
1 1/8" (.065") w x 1" (.085") h	◆	◆	◆	◆	◆	◆	◆	◆	◆
Pickets:									
5/8" x 5/8" (.045")	◆	◆	◆	◆	◆	◆	◆	◆	◆
Picket Spacing:									
3.792" Between Pickets	◆	◆	◆	◆	◆	◆	◆	◆	◆
Finial Option:									
Triad & Quad	◆	◆	◆	◆				◆	
Section Options:									
Bracketed System	◆	◆	◆	◆	◆	◆	◆	◆	◆
Ring Kit	◆	◆	◆	◆				◆	
Short Picket Option w/Spear	◆	◆	◆						
Short Picket Option w/Finial	◆	◆	◆						
Short Picket Option w/Flat Top						◆	◆		

- 4000 SERIES -

Styles:	4131	4132	4220	4230	4233
Fence Heights:					
48"	◆	◆		◆	◆
§ 48 1/2"		◆			
§ 54"			◆	◆	◆
60"	◆	◆		◆	◆
72"	◆	◆		◆	◆
Section Length:					
8' Centers	◆	◆	◆	◆	◆
Standard Posts:					
2 1/2" x 2 1/2" (.065")	◆	◆	◆	◆	◆
Heavy Duty Posts:					
2 1/2" x 2 1/2" (.090")	◆	◆	◆	◆	◆
2 1/2" x 2 1/2" (.125")	◆	◆	◆	◆	◆
Gate Posts:					
2 1/2" x 2 1/2" (.065") w/Inserts = .190" Wall	◆	◆	◆	◆	◆
4" x 4" (.125")	◆	◆	◆	◆	◆
6" x 6" (.185")	◆	◆	◆	◆	◆
Post Caps:					
Flat (Standard) 2 1/2", 4", 6"	◆	◆	◆	◆	◆
Ball (Optional) 2 1/2", 4"	◆	◆	◆	◆	◆
Rails:					
1 1/4" (.070") w x 1 1/2" (.110") h	◆	◆	◆	◆	◆
Pickets:					
3/4" x 3/4"	◆	◆	◆	◆	◆
Picket Spacing:					
3.963" Between Pickets Pool Models have 3.534" Between Pickets	◆	◆	◆	◆	◆
Finial Option:					
Triad & Quad	◆	◆			◆
Section Options:					
Bracketed System	◆	◆	◆	◆	◆
Routed System	◆	◆	◆	◆	◆
Ring Kit	◆	◆			
Short Picket Option w/Spear	◆	◆			
Short Picket Option w/Finial	◆	◆			
Short Picket Option w/Flat Top				◆	◆

§ Meets National Pool Code Requirements for Height and Spacing. Check Local Pool Code Requirements.
CSI 3-Part Specs available at diggerspecialties.com

- CUSTOM FENCE STACKER STORAGE SYSTEM -

Simply slide out each individual section as needed. The remaining sections stay secure and protected.



Each fence section is individually wrapped for protection during shipment.



All Fence Stacker Units are built with wood frames and corner gussets for strength.



All Fence Stacker Units are shrink wrapped for protection from the weather.

- All Regis 3000/4000 Series sections are stored in our custom Fence Stacker Storage Units with support rails for easy access.
- Custom built shipping units designed for specific Regis models and spacers are used to prevent shifting during shipment.
- Every Fence Stacker Unit is a fully enclosed six-sided crate.
- Safe Shipping
- Convenient Storage
- Easy Access



We have tried to make this catalog comprehensive and factual. We reserve the right to discontinue at any time, without notice, colors, materials, equipment and availability. Since some information may have been updated since the time of printing, we are not responsible for typographical or pictorial errors. Materials shown may vary slightly from actual colors. ©Digger Specialties 2017 SP 09/17 99583