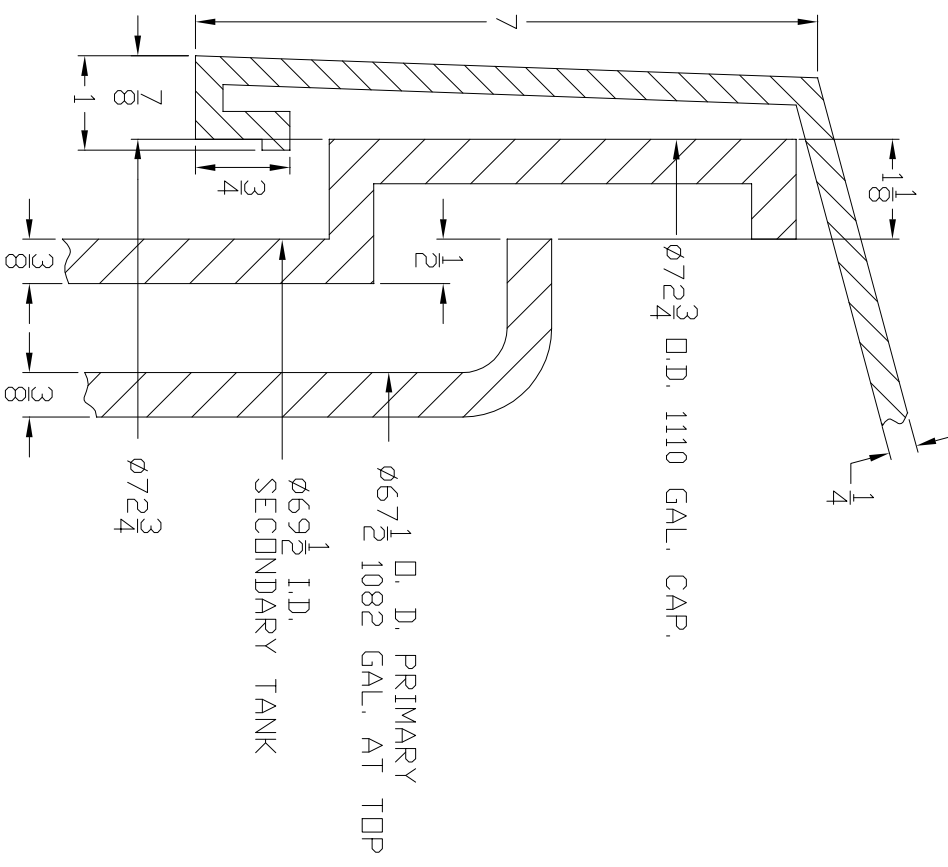


Ø16 ACCESS IS STANDARD

A-A



Ø72 3/4 D.D. 1110 GAL. CAP.

Ø67 1/2 D. D. PRIMARY
SECONDARY TANK AT TOP

Ø69 1/2 I.D.
SECONDARY TANK

Ø72 3/4

THIS DRAWING & DESIGN IS THE PROPERTY OF CHEM-TAINER INDUSTRIES INC. IT MAY NOT BE USED FOR ANY PURPOSE OTHER THAN BY THE OWNER. CHEM-TAINER DOES NOT AUTHORIZE THE REPRODUCTION OR CONVEYANCE OF ANY INFORMATION CONTAINED HEREIN.

NOTE: PRIMARY TANK - TC6672AA
SECONDARY TANK - TC6972DC
COVER FOR TANK - TC69CVDC

ALL DIMENSIONS SHOWN ARE OUTSIDE PART DIMENSIONS IN INCHES, AND VARY BY THE STANDARD ROTATIONAL MOLDING TOLERANCE OF ±2%.

Rev. 0	Date 02/11/00	File Name	DC7485-3
CHEM-TAINER Industries Inc. 361 Neptune Ave. N. Babylon, NY 11704 (516) 661-8300 Fax: (516) 661-8209		Date	Mold Location
		02/11/00	CA
TITLE 1000 GAL. DOUBLE WALL CONTAINMENT TANK ASSEMBLY		Drawn By:	Cust. Rep.
Part # TC7485DC		Dwg. #	C-7485-15