



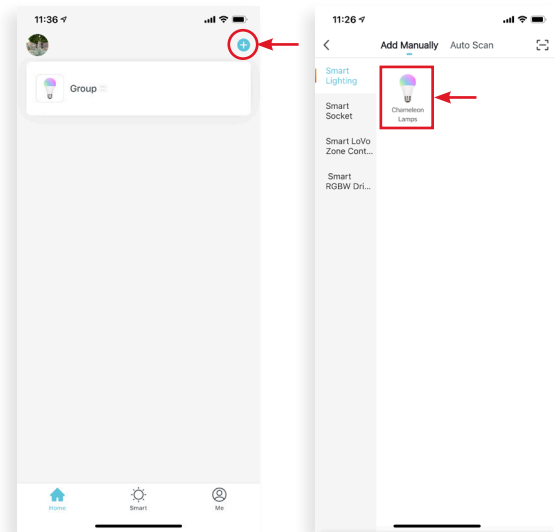
# CHAMELEON SERIES LAMP SET UP INSTRUCTIONS



1. **Download Brilliance Smart** from the Apple App Store or Google Play and open the app. If you are a first time user, register for an account. For full functionality, be sure to allow the app to use Bluetooth and your location.

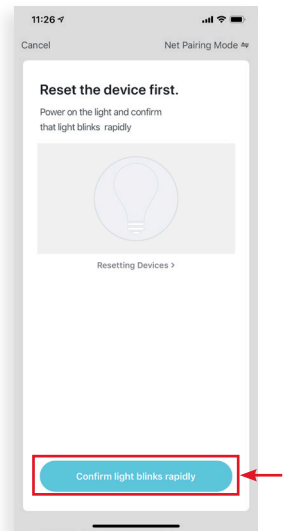


2. On the home screen, tap the **Plus (+)** button at the upper-right corner and then tap **Chameleon lamps**.

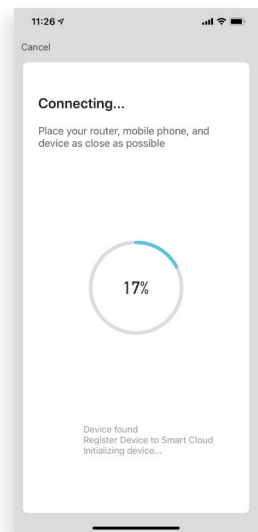
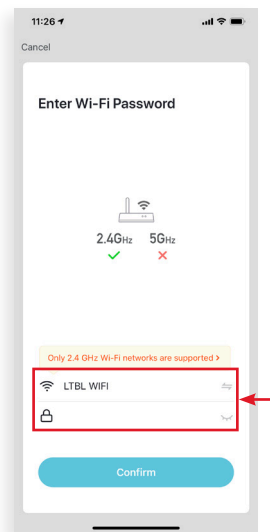


3. Connect the lamp to a power source, and then turn it **on-off-on-off-on**.

4. The light will blink rapidly to indicate it is in Set Up Mode. Tap the **Confirm light blinks rapidly** button.



4. **Enter your 2.4 GHz Wi-Fi information** and wait for the lamp to sync. Note that only 2.4GHz Wi-Fi networks are supported.



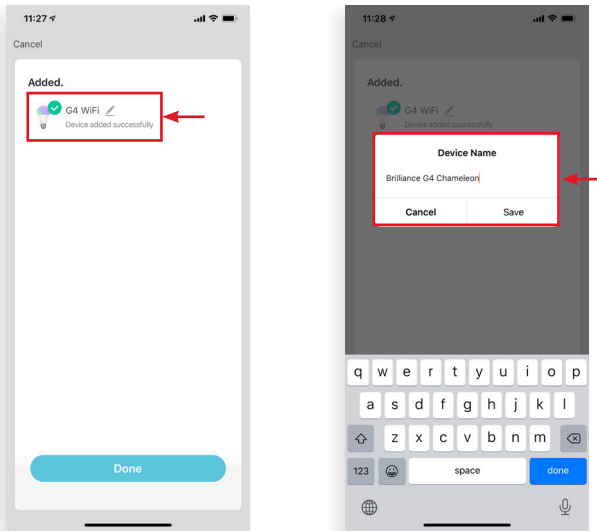
*Set Up continues on the next page*



# CHAMELEON SERIES LAMP SET UP INSTRUCTIONS

## Set Up - Continued

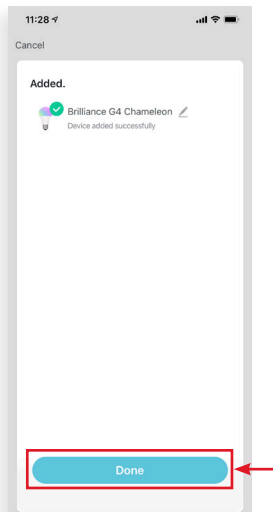
5. Once the device is synced, tap the **Pencil icon** next to the default device name to rename it and then tap **Save**.



Note: if you cannot connect, see instructions for AP Mode

6. When the new device name is displayed, tap **Done**.

Now the Set Up is complete and you can further program the device.



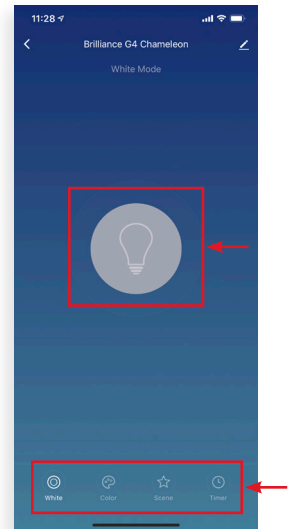
7. The lamp control screen is displayed. Tap the **Lamp icon** to turn the lamp on or off.

Tap **White** to change the Kelvin temperature.

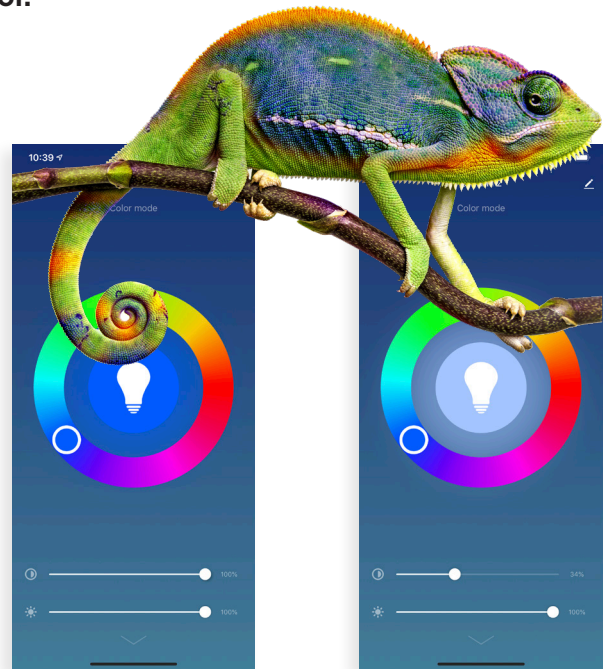
Tap **Color** to change the hue or saturation.

Tap **Scene** to specify a custom scene.

Tap **Timer** to create a schedule.



8. Enjoy Brilliance Chameleon, the new world of color.

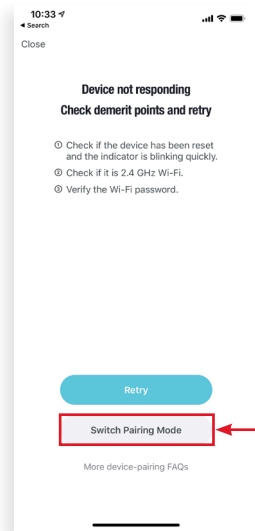




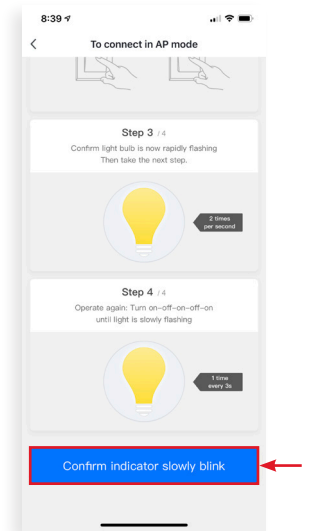
# CHAMELEON SERIES LAMP SET UP INSTRUCTIONS

## AP Mode

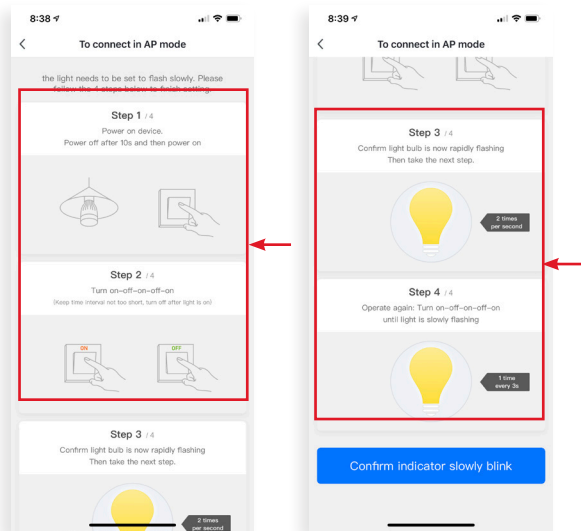
1. If the set up does not connect, tap **Switch Pairing Mode** to start AP Mode Set Up.



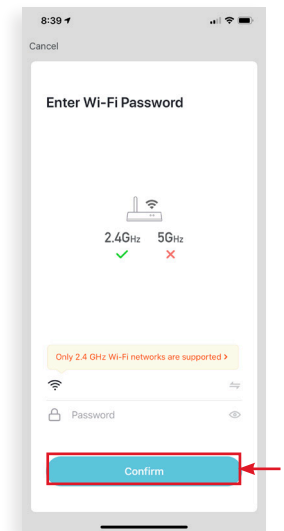
3. Once the light is flashing slowly, tap **Confirm indicator slowly blinks**.



2. Follow the instructions to connect in AP mode.



4. Enter your 2.4 GHz Wi-Fi network name and password, and then tap **Confirm**. Note that only 2.4GHz Wi-Fi networks are supported.



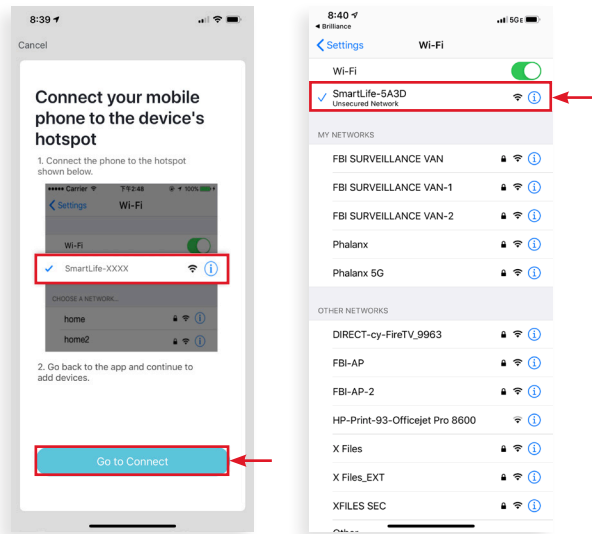
*AP Mode Set Up continues on the next page*



# CHAMELEON SERIES LAMP SET UP INSTRUCTIONS

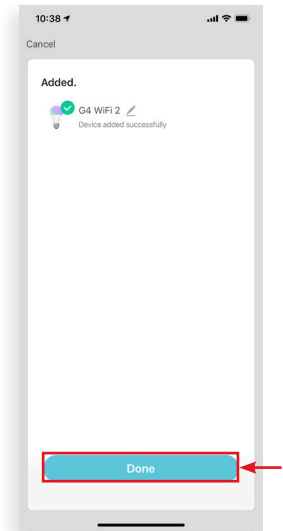
## AP Mode - continued

5. Next connect your device to the mobile hotspot. Tap **Go to Connect** to open your device's settings, and then tap the network named **SmartLife**.



7. On the Added screen, the device name is displayed. Tap **Done** to complete the AP Mode set up.

Now you can further program the device.



8. Enjoy Brilliance Chameleon, the new world of color.

6. Navigate back to the Brilliance Smart app to finish the connection process.

