



Cyanuric Acid-Free, More Convenient than Bleach and More Economical than Bromine.

EASY FEED CHLORINATION SYSTEM LF-12



THE VERSACHLOR® EASY FEED CHLORINATION SYSTEM LF-12

Specially designed for wading pools and spas, the VersaChlor LF-12 is the smallest unit in a full line of VersaChlor chlorinators engineered with commercial pools in mind. That means you can now manage multiple property pools, from the smallest to the largest, with different sized chlorinators from the same system. The VersaChlor system is cyanuric acid-free and delivers chlorine at a more predictable rate than Trichlor systems. It's also more economical than Bromine. Plus, compared to bleach, it has lower acid consumption and none of the hassle or mess that can come with filling tanks and hauling heavy drums.



**VersaChlor®
Easy Feed
Chlorination
System LF-12**
HMAC Pools up
to 20,000 Gallons
Outdoor



NSF/ANSI
Standard 50 Listed

FEATURES

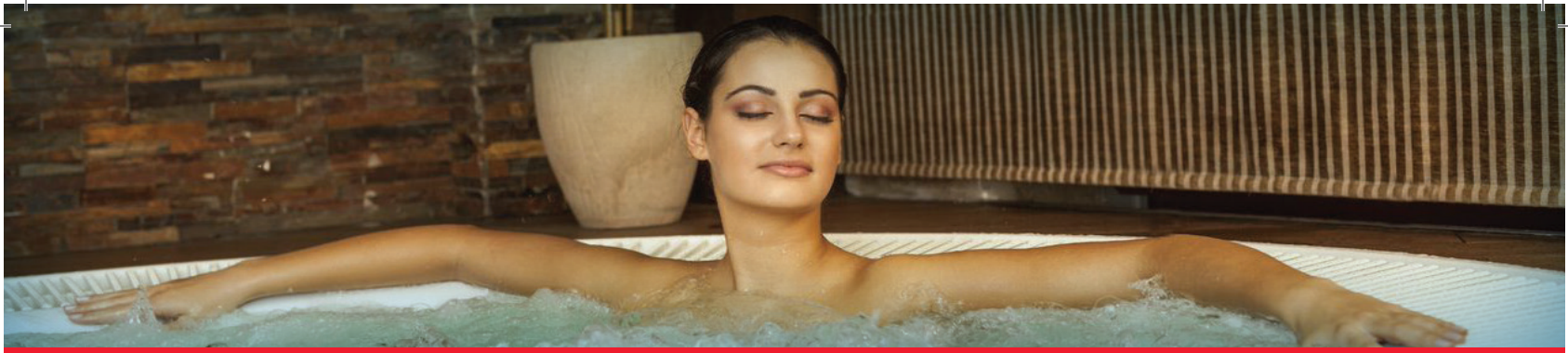
- **eZ-Out Tablet-Saver Dispenser with Dial-in Delivery Rate**
Holds 12 stacked Versachlor tablets and enables you to control chlorine delivery with more accuracy and less waste. You get the chlorine you need – no more, no less. That makes the VersaChlor more economical than Bromine and a clear winner in any spa or wading pool.



ENGINEERED FOR HMAC POOLS UP TO:

- 20,000 gallons (outdoor stabilized)
- 10,000 gallons (outdoor unstabilized)
- 50,000 gallons (indoor)

*Stabilizer levels assumed to be 15 ppm. Treatable gallons vary depending on factors such as bather load, climate, stabilizer level, etc.



THE VERSACHLOR® EASY FEED CHLORINATION SYSTEM LF-12

The VersaChlor LF-12 Easy Feed chlorinator combines with the patented calcium hypochlorite cubes with scale inhibitor to deliver predictable rates of chlorine for a wide variety of HMAC pool water applications. The VersaChlor chlorinator has no moving parts and no small openings that can clog. This frees operators from frequent, time consuming maintenance. In most cases, once a year cleaning is all that is required.

Specifications

Chlorinator footprint	8" diameter
Inlet	Additional 8" for flow meter and fittings
Height	23"
Inlet connection	¾" Sch 40 Socket connection or 1" FPT use ¾" Sch 40 pipe (or flex hose)
Outlet connection	¾" Sch 40 Socket connection; use ¾" Sch 40 pipe (or flex hose)
Electrical requirements	None; 120V 15 amp circuit for Forced Venturi installation only
Storage Capacity	1.4 lbs. (12 tablets)
NSF 50:	2 lb. chlorine/day

Multiple Installation Options Available

- **Forced Venturi Installation**
Two 1 ½" connections
120v power required
Controller optional
- **Gravity Installation**
¾" connection (inlet),
1" connection (outlet)
With or without controller
- **Suction Installation**
Two ¾" connections
Controller not recommended

VersaChlor Tablets

VersaChlor calcium hypochlorite cubes are specially engineered and independently tested by the labs at NSF International to work in VersaChlor Easy Feed systems in accordance with NSF/ANSI Standard 50. The tablets undergo a multi-step manufacturing and quality control process to ensure they will not soften, break apart or clog the system. VersaChlor cubes contain a scale inhibitor for clean chlorinator operation.



www.VersaChlor.com

Axial Water Treatment Products
11 Stanwix St. Suite 1900
Pittsburgh, PA 15222
800-245-2974



VersaChlor is a registered ® trademark of Axiall Ohio, Inc.
Copyright © 2013 Axiall Corporation, Inc.