

TREE-äge® R10

INSECT CONTROL
Trunk Injection

CONTINUING THE TREE-AGE LEGACY



TREE-äge® R10

(9.7% Emamectin Benzoate)

Newest addition to the highly effective line of TREE-äge products, with the lowest dose guidance, and quickest injection times.

Effective for: Emerald Ash Borer, Invasive Shot Hole Borer; Spruce, Western, Southern, and Mountain Pine Beetles; Leaf Feeding Caterpillars, Bagworms, Webworms, Leafminers, Conifer Mites, and more.

- 040-4130 R10- pint*
- 040-4135 R10- Case of 4 pints

* 1 pint treats 24 trees (10" DBH) at the medium rate

Why Use TREE-äge R10?

When used with Arborjet's scientifically advanced technology and equipment such as the QUIK-jet AIR®, field studies demonstrate that TREE-äge R10 injects three times faster than generic brands and significantly reduces tree pest damage versus other tested products. This is particularly useful when injecting conifers and other diffuse porous trees that typically take more time to inject. It can be used on trees grown in residential and commercial landscapes, golf courses, parks, municipal areas, and areas of greater environmental sensitivity.

- Treat up to 3 times faster with less than half the dose needed
- Two-year control of listed pests including Emerald Ash Borer, Pine Bark Beetle, Gypsy Moth, and more
- Works with all Arborjet equipment
- For use by commercially licensed applicators

Provides two-year control of...



Emerald Ash Borer



Pine Bark Beetle



Gypsy Moth

...and More!

Photo Credit: EAB - David Cappaert, Bugwood.org, Pine Bark Beetle - Ron Long, Simon Fraser University, Bugwood.org

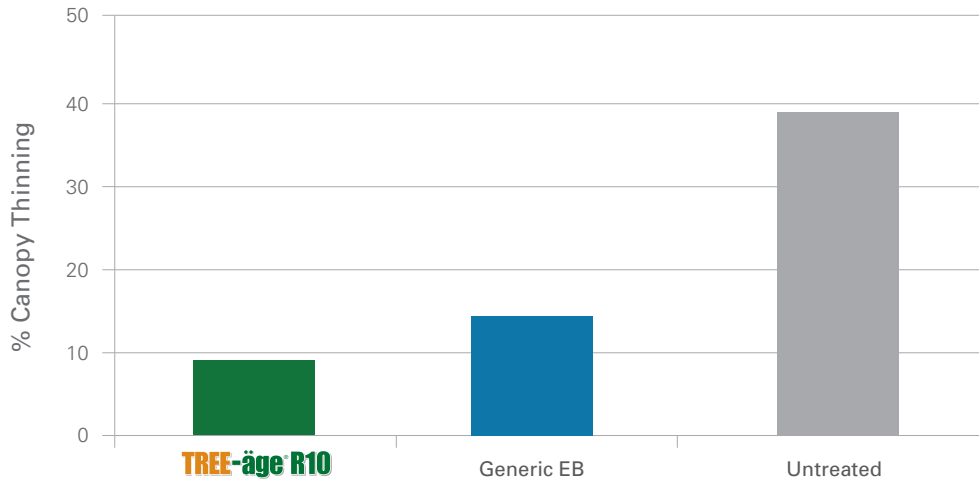
arborjet.com

ARBORJET®

Proven Results

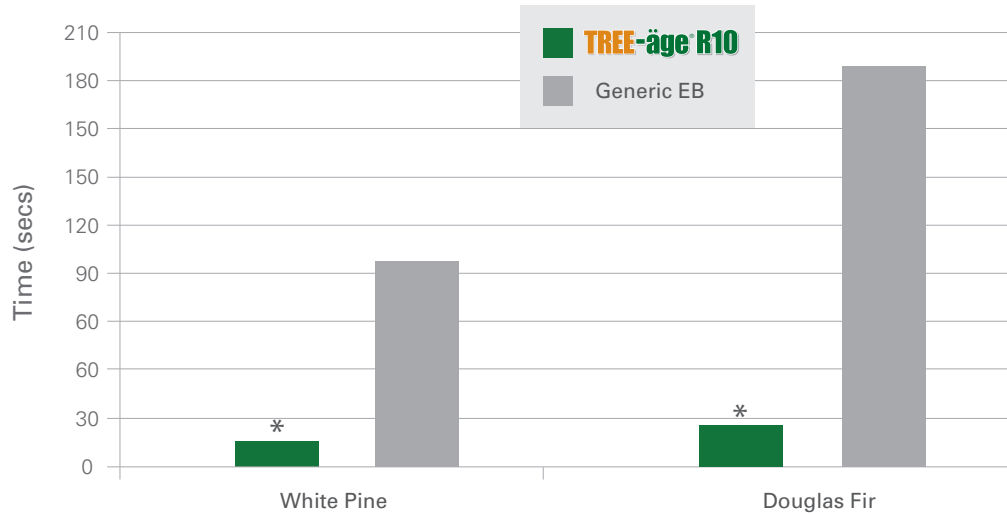
Field studies have shown TREE-äge R10 to have high levels of efficacy while allowing for significantly reduced injection times.

TREE-äge R10 Ash Canopy Thinning Over Time



TREE-äge R10 successfully reduced green ash canopy thinning from Emerald Ash Borer infestations after injection

Time to Inject Various Conifers with the QUIK-jet Air®



*Significantly different from Generic EB

The average time to inject TREE-äge R10 was significantly faster than the comparative product when both were applied as neat and diluted applications.

©2019 Arborjet, Inc. **Important: Always read and follow label instructions. Some crop protection products may not be registered for sale or use in all states or counties. Please check with your state or local extension service to ensure registration status.** TREE-äge® Insecticide is a Restricted Use Pesticide and must only be sold to and used by a state certified applicator or by persons under their direct supervision. TREE-äge® is a registered trademark of Arborjet, Inc. In addition to the pests noted on the TREE-äge federally registered label, Arborjet supports a FIFRA Section 2(ee) recommendation for TREE-äge insecticide to control additional bud and leaf and shoot, stem, trunk and branch pests. Please see the section 2(ee) recommendation to confirm that the recommendation is applicable in your state.