

Fillable Friends[®]

Fillable Friends is a new twist on mosaic designs. Instead of using a tile-filled mosaic design, you simply fill the patented pre-fabricated stencil with any fillable media you want, transforming the stencil into a beautiful piece of art. Fillable Friend stencils can be filled with plaster, pebble, glass beads, concrete and more. Now there's a simple and inexpensive alternative to costly tile designs. Jazz up your pool, spa, walkways or walls with Fillable Friends designs.

Stencils are available in two standard colors: White or Dark Gray.

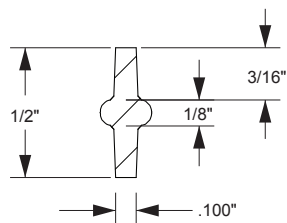
STANDARD STENCIL COLORS 01 05

Code Key

Example: **F1xxx-xx**

F1 – Stencil xxx – Stencil Number xx – Stencil Color (i.e. 01 = white)

Typical cross section of all fillable friends



Cross Section

Typical non-filled stencil



Turtle Stencil

Size:

- 14¹/₄" x 11³/₄" small
- 17³/₄" x 14⁵/₈" medium
- 22¹/₄" x 18¹/₄" large

Small stencil only:

part # F1022-xx
6 per case

Medium stencil only:

part # F1023-xx
6 per case

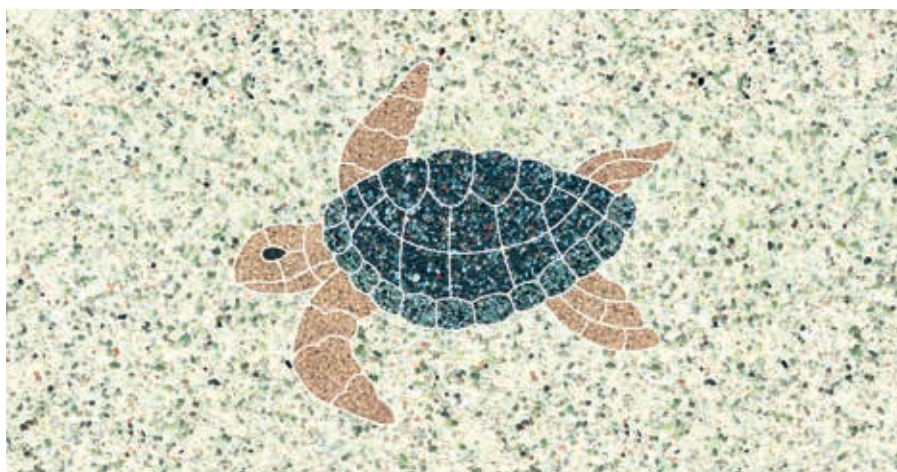
Large stencil only:

part # F1024-xx
6 per case

Set of 1 Small, 1 Medium

and 1 Large Turtle stencil:
part # F1030-xx
6 sets per case

U.S. and foreign patents pending



Picture shows an example of a filled Turtle

