

# PIPELINE FILTERS® FOR USE UP TO 35,000 GALLONS



Certified to  
NSF/ANSI/CAN 50

Compact Filters Engineered for  
*Safe and Easy Cartridge Access and Maximum Performance*

## FEATURES

Max commercial 35,000 gallons, 6-hour turn over, calculated per ISPSC

Max residential 144,000 gallons, 12-hour turn over

Compact filters engineered for safe and easy cartridge access

Safe self-aligning removable locking collar/top Super strength resin for enhanced structural integrity

Self-aligning linking base for parallel filtration systems

Rubber protected stainless steel gauge

Ergonomic pressure relief valve

2" socket x 2½" spigot PVC union connections included

1 per case

8 per pallet

**NEW** For a maximum for 35,000 gallons

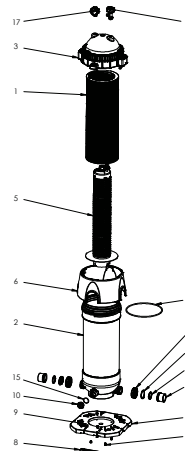
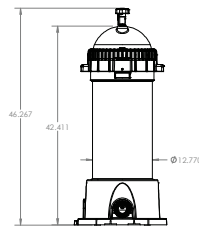
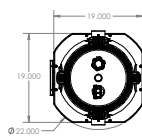
## **PIPELINE FILTERS®** **COMPACT FILTERS ENGINEERED FOR MAXIMUM SAFETY AND PERFORMANCE**



Model # PLF35000



**AquaStar's  
Superior Pure  
Pleat Technology  
Cartridge**  
Model # PF35000



1. Cartridge, 35000 Gallon, PipeLine Filter
2. Housing Assembly, 35000 Gallon, PipeLine Filter
3. Lid Assembly, PipeLine Filter
4. Oring, #453, 275 THK. x 11.975 I.D., EPDM 70A
5. Filter Core Assembly, 35000 Gallon
6. Cover, Base, PipeLine Filter
7. Base Plate, PipeLine Filter
8. Plate Link, PipeLine Filter
9. 10 x 3/4" Pan Head Phillips, 316 SS
10. Drain Plug, PipeLine Filter
11. Snap Ring, PipeLine Filter
12. Union Gasket, PipeLine Filter
13. Union Nut, 2" Union
14. Union, 2" Socket x 2.5" Spigot, PVC
15. Oring, #224, EPDM 70A
16. Relief Valve Assembly, PipeLine Filter
17. Pressure Gauge Assembly, PipeLine Filter

U.S. Patent No. 10,792,596, 11,014,027, and  
Other Patents Pending

P 877-768-2717 F 877-276-POOL Outside the US: P +1-949-336-1940 F +1-949-336-1940  
info@aquastarpoolproducts.com www.aquastarpoolproducts.com