

PIPELINE FILTERS® FOR USE UP TO 27,000 GALLONS



Certified to
NSF/ANSI/CAN 50

Compact Filters Engineered for
Safe and Easy Cartridge Access and Maximum Performance

FEATURES

- Max commercial 27,000 gallons, 6-hour turn over, calculated per ISPSC
- Max residential 108,000 gallons, 12-hour turn over
- Compact filters engineered for safe and easy cartridge access
- Safe self-aligning removable locking collar/top
- Super strength resin for enhanced structural integrity
- Self-aligning linking base for parallel filtration systems
- Rubber protected stainless steel gauge
- Ergonomic pressure relief valve
- 2" socket x 2½" spigot PVC union connections included
- 1 per case
- 8 per pallet

NEW For a maximum for 27,000 gallons

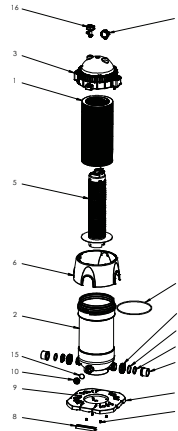
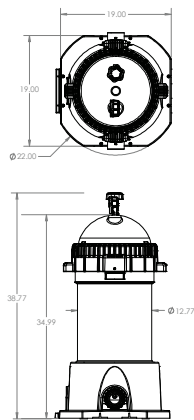
PIPELINE FILTERS® **COMPACT FILTERS ENGINEERED FOR MAXIMUM SAFETY AND PERFORMANCE**



Model # PLF27000



**AquaStar's
Superior Pure
Pleat Technology
Cartridge**
Model # PF27000



1. Cartridge, 27000 Gallon, PipeLine Filter
2. Housing Assembly, 27000 Gallon, PipeLine Filter
3. Lid Assembly, PipeLine Filter
4. Oring, #453, 275 THK. x 11.975 I.D., EPDM 70A
5. Filter Core Assembly, 27000 Gallon
6. Cover, Base, PipeLine Filter
7. Base Plate, PipeLine Filter
8. Plate Link, PipeLine Filter
9. 10 x 3/4" Pan Head Phillips, 316 SS
10. Drain Plug, PipeLine Filter
11. Snap Ring, PipeLine Filter
12. Union Gasket, PipeLine Filter
13. Union Nut, 2" Union
14. Union, 2" Socket x 2.5" Spigot, PVC
15. Oring, #224, EPDM 70A
16. Relief Valve Assembly, PipeLine Filter
17. Pressure Gauge Assembly, PipeLine Filter

U.S. Patent No. 10,792,596, 11,014,027, and
Other Patents Pending

P 877-768-2717 F 877-276-POOL Outside the US: P +1-949-336-1940 F +1-949-336-1940
info@aquastarpoolproducts.com www.aquastarpoolproducts.com