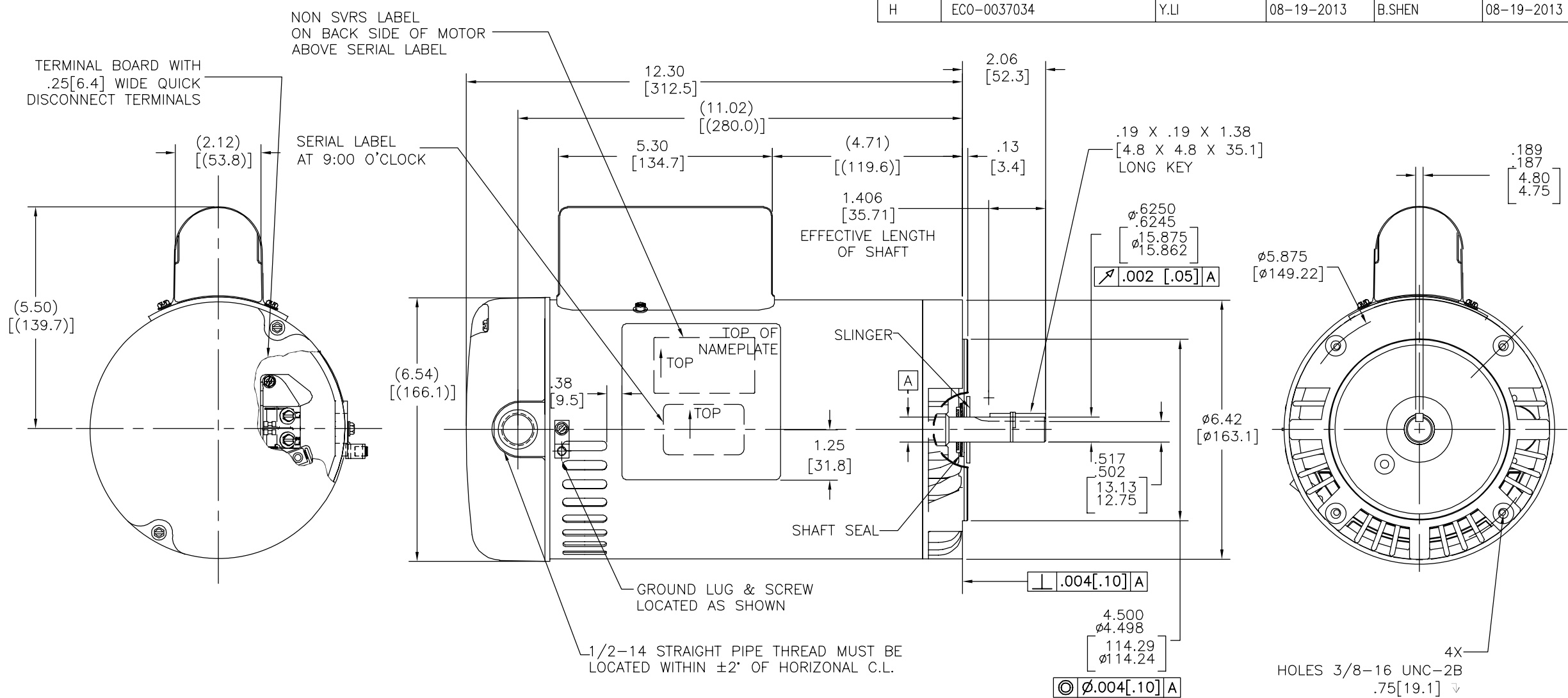


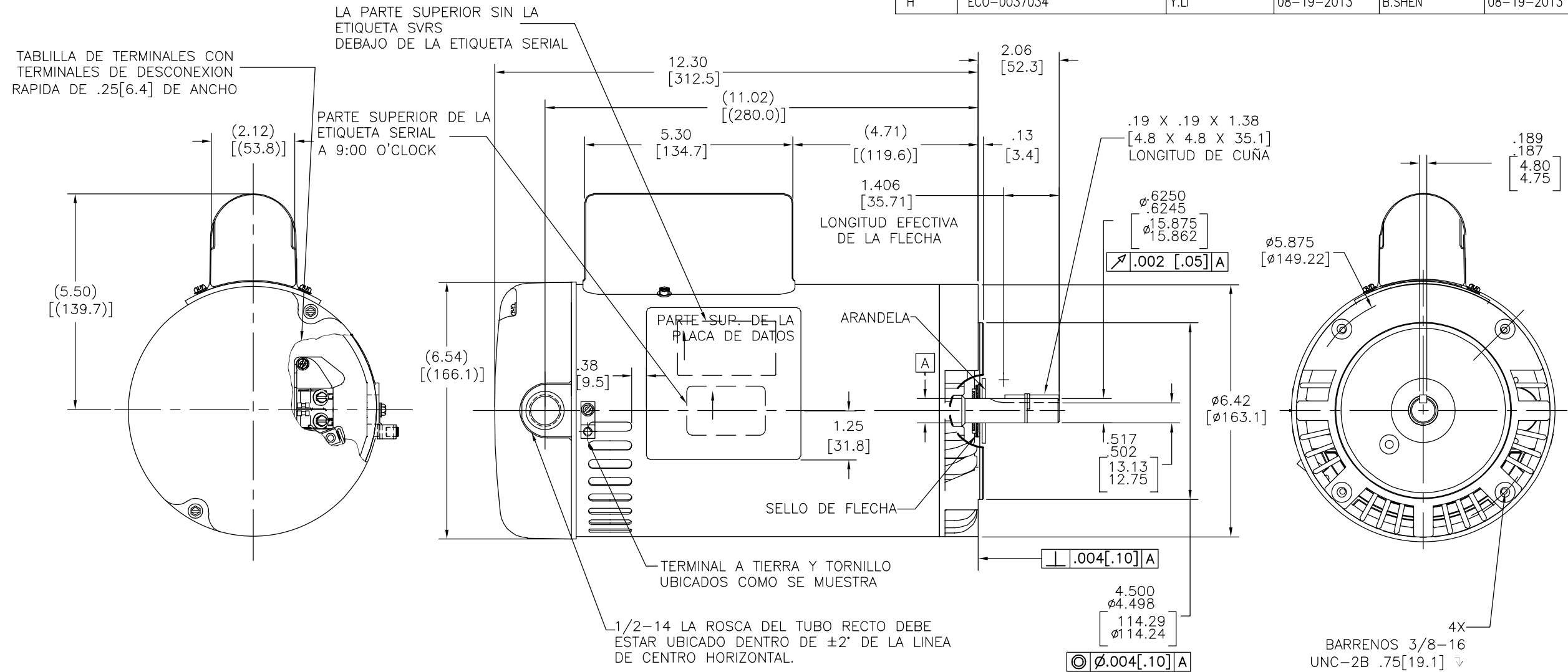
REV	ECO	REV BY	DATE	APPD	DATE
H	ECO-0037034	Y.LI	08-19-2013	B.SHEN	08-19-2013



NAMEPLATE DATA	EXTERNAL CONNECTION DIAGRAM	NOTES
MODEL: K56AA02A01 CUST PN: SK1302V1 HP: 3.0 SF: 1.15 ROT: CCWPE RPM: 3450 TYPE: CP CODE: G FORM: FRAME: Y56C VOLTS: 208-230 AMPS: MAX AMPS: -- SF AMPS: 15.0-13.3 PH: 1 HZ: 60 INS: B AMB: 50 DUTY: CONT ENCLOSURE: ODP THERMALLY PROTECTED		<ol style="list-style-type: none"> 1. END PLAY NOT TO EXCEED .010[.25] MEASURED WITH NO THRUST. 2. FINISH PAINT TO BE BLACK LACQUER 3. STAINLES STEEL SHAFT 4. .44[11.2] WRENCH FLATS ON SHAFT -FOR ACCESS TO THIS WRENCH FLAT REMOVE END COVER

PERFORMANCE CURVE	APPROVED SAMPLE	GEOMETRIC CHARACTERISTICS & SYMBOLS ▭ FLATNESS — STRAIGHTNESS ∠ ANGULARITY ⊥ PERPENDICULARITY (SQUARENESS) // PARALLELISM ○ ROUNDNESS (CIRCULARITY) ∅ CYLINDRICITY △ PROFILE OF ANY SURFACE ∩ PROFILE OF ANY LINE ↗ RUNOUT ⊕ TRUE POSITION ⊙ CONCENTRICITY = SYMMETRY	UNLESS OTHERWISE SPECIFIED DIM. TOLERANCES ARE AS FOLLOWS: INCH X XX XXX XXXX ±.1 ±.02 ±.005 ±.0005 mm ±0.5 ±0.13 ±0.013 ANG. ±.50 DEG REMOVE BURRS & BREAK SHARP EDGES: INCH .003-.015 mm 0.1-0.4 CORNER FILLETS TO: INCH .020 mm 0.5 MACHINE SURFACES: INCH 125 mm 3.2	DR BY: TZ 02-25-2008 APPD: MO 02-25-2008 EDS DATE 11-11-2011 FORMAT REV H	REGAL REGAL-BELOIT CORPORATION DESCRIPTION MODEL-CFHP-56FR OUTLINE SIZE C DWG NO SK1302V1 SCALE NONE SHEET 1
101101011	CSA		THIRD ANGLE PROJECTION CONFIDENTIAL: THIS DRAWING AND ITS INFORMATION ARE THE EXCLUSIVE AND CONFIDENTIAL PROPERTY OF REGAL-BELOIT CORPORATION AND ARE NOT TO BE DISCLOSED, DUPLICATED, DISTRIBUTED OR OTHERWISE USED WITHOUT THE WRITTEN CONSENT OF REGAL-BELOIT CORPORATION. -ALL RIGHTS RESERVED.		

REVISION:	ECO	REVISADO POR:	FECHA:	APROBADO POR:	FECHA:
H	ECO-0037034	Y.LI	08-19-2013	B.SHEN	08-19-2013



NAMEPLATE DATA	EXTERNAL CONNECTION DIAGRAM	NOTES
MODEL: K56AA02A01 CUST PN: SK1302V1 HP: 3.0 SF: 1.15 ROT: CCWPE RPM: 3450 TYPE: CP CODE: G FORM: FRAME: Y56C VOLTS: 208-230 AMPS: MAX AMPS: -- SF AMPS: 15.0-13.3 PH: 1 HZ: 60 INS: B AMB: 50 DUTY: CONT ENCLOSURE: ODP THERMALLY PROTECTED	<p>GRD GREEN (GROUND)</p> <p>USE COPPER CONDUCTORS ONLY. INSTALL MOTOR WITH VENTS DOWN. ACCEPTABLE FOR FIELD WIRING</p>	<ol style="list-style-type: none"> JUEGO AXIAL NO DEBE EXCEDER .10[.25] MEDIDO SIN EMPUJE. ACABADO DE PINTURA DEBE SER NEGRO LACQUER. FLECHA DE ACERO INOXIDABLE. .44[11.2] LLAVE PLANA EN LA FLECHA- PARA EL ACCESO A ESTA LLAVE PLANA REMUEVA LA CUBIERTA.

PERFORMANCE CURVE	APPROVED SAMPLE	CARACTERISTICAS DE GEOMETRIA Y SIMBOLOS ▽ PLANICIDAD - RECTITUD < ANGULARIDAD ⊥ PERPENDICULARIDAD (A ESQUADRA) // PARALELISMO ○ REDONDEZ (CIRCULARIDAD) ∅ CILINDRICIDAD △ PERFIL DE CUALQUIER SUPERFICIE ∩ PERFIL DE CUALQUIER LINEA † VARIACION ⊕ POSICION REAL ⊙ CONCENTRICIDAD = SIMETRIA	DIBUJADO POR: TZ	02-25-2008	REGAL REGAL-BELOIT CORPORATION DESCRIPCION: MODEL-CFHP-56FR OUTLINE TAMAÑO: C NUMERO DE DIBUJO: SK1302V1 ESCALA: NONE HOJA: 1
101101011	CSA		A MENOS QUE SE ESPECIFIQUE DE OTRA MANERA, LAS TOLERANCIAS DE LAS DIMS; SON LAS SIGUIENTES: PULG ±.1 ±.02 ±.005 ±.0005 mm ±0.5 ±0.13 ±0.013 ANG. ± 50 GRADOS ELIMINAR REBABAS Y ORILLAS FILOSAS DEL BORDE. PULG .003-.015 mm 0.1-0.4 FILETEAR ESQUINA: PULG .020 mm 0.5 MAQUINAR SUPERFICIES PULG 125 mm 3.2 DIMS METRICAS MOSTRADAS [PARENTESIS]	APROBADO POR: MO	
UL COMPONENT			TERCER ANGULO DE PROYECCION	FECHA EDS: 11-11-2011	
FILE#	CCN#	FILE#	GUIDE#	REV. FORMATO: H	
E14663	XEWR2	LR4642	4211-01		
CUSTOMER	DISTRIBUTION				

4

3

2

1

4

3

2

1