


 **Azor™**

Built using the latest top-of-the-line technology, the Azor is just that: a fresh new blend of good looks, great design, and long-lasting solidity. Easy to install and guaranteed for decades, this is a true investment in summer fun.



12' (3.66 m)	15' (4.57 m)
18' (5.49 m)	21' (6.40 m)
24' (7.32 m)	27' (8.23 m)
30' (9.14 m)	33' (10.16 m)



12' x 23' (3.66 m x 7.11 m)
15' x 26' (4.57 m x 7.92 m)
15' x 30' (4.57 m x 9.14 m)
18' x 33' (5.49 m x 10.16 m)

❖ Azor™ — Fallston wall 54"

Resin injection molding is one of the things that makes the Azor such an eye-opener: a revolutionary process that eliminates corrosion risks and guarantees long-term dependability. A streamlined design means fewer parts and easier installation!



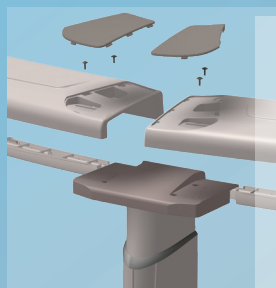
❖ y.e.s.

Yard Extender System

Invisible lateral supports on oval pools. For anyone who wants to make the most of their yard – and their pool!

❖ top ledge

- 8-inch (20 cm) injection-molded top ledge
- Incorporates multi-ribbed supports for optimum stability
- Features a sophisticated-looking metallic logo
- Two-color contrast provides incredible style

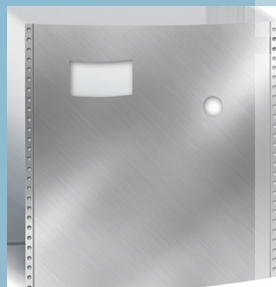


❖ assembly system

- Upper joiner plate screws to top ledge and upright using a simple top-down system
- Oversized upper joiner plate ensures greater stability for top ledge
- Upper joiner also acts as a ledge joint: fewer parts, easier installation and a cleaner look
- Perfectly fitting and locking parts
- Upper plate in a complementary shade to top ledge for contrast and style

❖ upright

- 6-inch (15 cm) injection-molded upright, with extra depth for greater stability
- Three-dimensional injection molding means greater detail and solidity
- Stylish metallic ring at the top of the upright

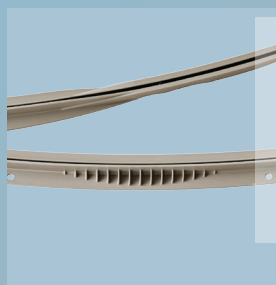
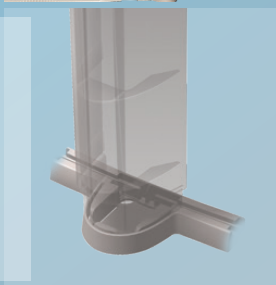


❖ steel panel

Our stainless steel panel provides protection against any corrosion against gasket failure and water leaks, extending the life of your pool.

❖ bottom snap-in joiner plate

- Joiner plate attaches to uprights using a snap-in system, no hardware required
- Smooth, quick installation into upright
- Made of resin: solid and corrosion-proof



❖ wall channel

- Resin top and bottom rails
- Smooth shape increases pool strength

❖ water safety

Your above ground pool has been designed to provide you with years of safe, family fun. This entails that water safety must always be taken into account. When used incorrectly, your above ground swimming pool can be dangerous; above ground pools are shallow, and this makes diving and jumping unsafe. To ensure your above ground pool is used safely you must observe the safety precautions that are provided to you when you purchase an above ground pool and conform to all local regulations.

The dimensions, weights, illustrations and other specifications are approximate.

The company reserves the right to modify and/or discontinue without notification any feature in any pool model. © Copyright 2014 • 01/14 INH310114

